



Materials	Temp. Range	
Low Density Polyethylene	-70°C	to 80°C
High Density Polyethylene	-70°C	to 80°C
Nylon	-30°C	to 93°C



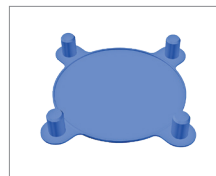
Caps & Plugs (CP)



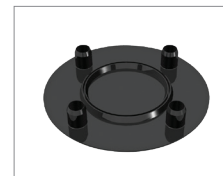
Hydraulic Fitting Plugs (HF)



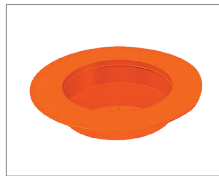
Bolted Flange Protector (BFP)



Stud-hole Flange Protector (FC)



Stud-hole Flange Protector (FC)



Valve-Flange Protector (FP)



Tool Joint Protector (TJP)



Sucker Rod Cap (SR) & Plugs (FPS)



EUE

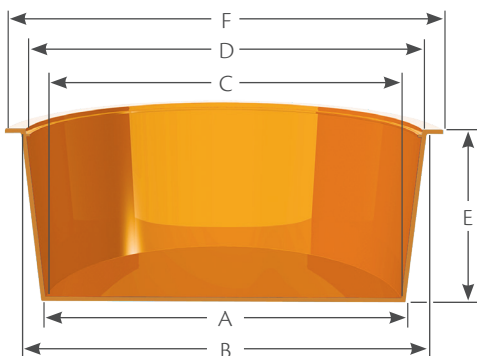


Sleeve Mesh (SM)

## Product Description

Our protector products are excellent for preventing damage to equipment during storage or transport. Additional protector products are available upon request.

## Caps & Plugs



Composed of low density polyethylene.

Part Number	Dimensions					
	A	B	C	D	E	F
CP 0	0.174	0.241	0.110	0.177	0.410	0.380
CP 1	0.239	0.303	0.175	0.239	0.380	0.470
CP 1X	0.267	0.335	0.205	0.273	0.410	0.470
CP 2	0.299	0.367	0.235	0.303	0.410	0.500
CP 2X	0.331	0.397	0.267	0.333	0.380	0.560
CP 3	0.362	0.428	0.298	0.364	0.410	0.560
CP 3X	0.392	0.459	0.328	0.395	0.410	0.590
CP 4	0.422	0.486	0.358	0.422	0.410	0.620
CP 4X	0.448	0.512	0.384	0.448	0.410	0.660
CP 5	0.472	0.548	0.408	0.484	0.470	0.690
CP 5X	0.500	0.568	0.436	0.504	0.470	0.720
CP 6	0.533	0.608	0.469	0.544	0.470	0.750
CP 6X	0.551	0.633	0.487	0.569	0.500	0.780
CP 241S	0.552	0.612	0.490	0.550	0.340	0.750
CP 7	0.580	0.668	0.518	0.606	0.530	0.840
CP 7X	0.610	0.695	0.549	0.634	0.530	0.840
CP 8	0.642	0.729	0.578	0.665	0.500	0.880
CP 8X	0.678	0.755	0.614	0.691	0.530	0.880
CP 9	0.691	0.787	0.627	0.723	0.590	0.940
CP 9X	0.727	0.825	0.663	0.761	0.590	1.000
CP 710	0.750	0.805	0.688	0.743	0.190	0.860
CP 10	0.752	0.849	0.688	0.785	0.590	1.000
CP 11	0.803	0.912	0.739	8.480	0.660	1.060
CP 11x	0.819	0.933	0.755	0.869	0.620	1.130
CP 12	0.869	0.973	0.805	0.909	0.660	1.130
CP 12X	0.915	1.040	0.855	0.980	0.720	1.160
CP 13	0.967	1.092	0.903	1.028	0.780	1.250
CP 249W	0.975	1.104	0.918	1.047	0.750	1.440
CP 13B	0.980	1.049	0.916	0.985	0.500	1.250
CP 13X	0.997	1.144	0.933	1.080	0.780	1.310
CP 14	1.093	1.219	1.029	1.155	0.780	1.410
CP 14X	1.179	1.286	1.115	1.222	0.750	1.440
CP 15	1.226	1.354	1.162	1.290	0.750	1.500
CP 15X	1.233	1.358	1.175	1.300	0.840	1.500

# Protectors

IMPERIAL SEALS

## Caps & Plugs



Composed of high density polyethylene.

Part Number	Dimensions					
	A	B	C	D	E	F
CP 16	1.312	1.465	1.248	1.401	0.750	1.620
CP 17B	1.344	1.507	1.282	1.445	0.940	1.770
CP 17	1.451	1.601	1.387	1.537	0.750	1.750
CP 17S	1.519	1.602	1.455	1.538	0.750	1.750
CP 18	1.560	1.682	1.498	1.620	0.780	1.880
CP 18X	1.633	1.750	1.569	1.690	0.750	1.840
CP 19	1.752	1.882	1.688	1.818	0.780	2.000
CP 20	1.807	1.938	1.743	1.874	1.000	2.160
CP 210	1.847	2.000	1.783	1.936	1.030	2.130
CP 21	1.903	2.078	1.839	2.014	1.030	2.250
CP 220	1.981	2.133	1.917	2.069	1.000	2.250
CP 22S	2.017	2.147	1.953	2.083	0.750	2.310
CP 221	2.070	2.244	2.000	2.174	1.040	2.470
CP 230	2.136	2.312	2.074	2.250	1.030	2.560
CP 240	2.300	2.464	2.236	2.400	1.030	2.620
CP 33A	2.311	2.650	2.247	2.586	1.000	2.780
CP 250	2.396	2.604	2.332	2.540	1.160	2.810
CP 43A	2.457	2.750	2.395	2.688	1.000	2.880
CP 33A1	2.482	2.645	2.418	2.581	0.660	2.780
CP 44	2.641	2.790	2.579	2.728	0.784	2.970
CP 45A	2.720	2.990	2.656	2.926	1.000	3.130
CP 500	2.850	2.982	2.786	2.918	0.750	3.250
CP 55A	2.980	3.244	2.910	3.174	1.000	3.380
CP 53	2.996	3.159	2.916	3.079	0.470	3.410
CP 96A	3.270	3.562	3.200	3.492	1.120	3.690
CP 501	3.320	3.452	3.250	3.382	0.750	3.630
CP 1050	3.466	3.602	3.406	3.542	0.750	3.880
CP 341	3.552	3.732	3.478	3.658	1.000	4.000
CP 1052	3.676	3.802	3.596	3.722	0.750	4.000
CP 1063	3.928	4.074	3.848	3.994	0.750	4.380
CP 1070	4.214	4.459	4.134	4.379	1.000	4.940
CP 1072	4.368	4.622	4.288	4.542	1.000	5.000
CP 407	4.980	5.100	4.900	5.020	0.690	5.440
CP 344	5.326	5.494	5.217	5.385	0.880	5.880
CP 345	5.470	5.620	5.390	5.540	1.000	6.130
CP 351	6.008	6.184	5.918	6.094	1.000	6.630
CP 352	6.398	6.564	6.329	6.500	0.880	6.940
CP 365	6.668	6.774	6.562	6.668	1.500	7.190
CP 367	7.338	7.656	7.253	7.575	1.000	7.940
CP 368	7.658	7.846	7.574	7.762	1.000	8.120
CP 369	7.968	8.146	7.877	8.120	1.000	8.380