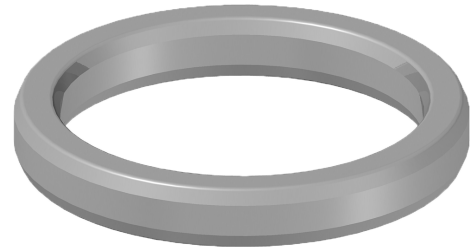


## Ring Type Joint Gaskets



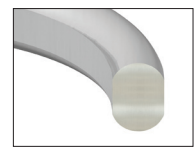
### R Series

R series ring type joint gaskets are manufactured to API-6A and ASME B16.20 specifications. Available in standard low carbon steel, stainless steel 304 and stainless steel 316.

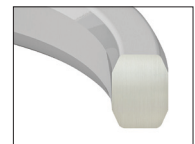
R series ring type joint gaskets are available in oval and octagonal designs. The oval design can be used in older round bottom gland designs, while both can be used in a flat bottom design. R Series are available up to 5,000 PSI.

### RX Series

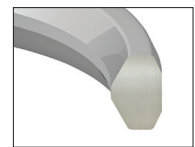
RX series are interchangeable with R series gaskets designed for API 6B flanges. RX out perform R series in situations that have higher pressures with more intense vibrations. RX gaskets are available up to 5,000 PSI.



R Oval



R Octagonal



RX

Pipe Size	Ring Number at Pressure Rating (lbs)						
	150	300	400	600	900	1500	2500
1/2"	-	R11	-	R11	-	R12	R13
3/4"	-	R13	-	R13	-	R14	R16
1"	R15	R16	-	R16	-	R16	R18
1-1/4"	R17	R18	-	R18	-	R18	R21
1-1/2"	R19	R/RX20	-	R/RX20	-	R/RX20	R/RX23
2"	R22	R/RX23	-	R/RX23	-	R/RX24	R/RX26
2-1/2"	R/RX25	R/RX26	-	R/RX26	-	R/RX27	R28
3"	R29	R/RX31	-	R/RX31	R/RX31	R/RX35	R32
3-1/2"	R33	R34	-	R34	-	-	-
4"	R36	R/RX37	R/RX37	R/RX37	R/RX37	R/RX39	R38
5"	R40	R/RX41	R/RX41	R/RX41	R/RX41	R/RX44	R42
6"	R43	R/RX45	R/RX45	R/RX45	R/RX45	R/RX46	R/RX47
8"	R48	R/RX49	R/RX49	R/RX49	R/RX49	R/RX50	R51
10"	R52	R/RX53	R/RX53	R/RX53	R/RX53	R/RX54	R55
12"	R56	R/RX57	R/RX57	R/RX57	R/RX57	R58	R60
14"	R59	R61	R61	R61	R62	R/RX63	-
16"	R64	R/RX65	R/RX65	R/RX65	R/RX66	R67	-
18"	R68	R/RX69	R/RX69	R/RX69	R/RX70	R71	-
20"	R72	R/RX73	R/RX73	R/RX73	R/RX74	R75	-
24"	R76	R77	R77	R77	R78	R79	-

# Ring Type Joint Gaskets

**Model R and RX** (For flanges in accordance with API spec 6A, model 6B)

Pipe Size	Ring Number at Pressure Rating (lbs)		
	2000	3000	5000
2-1/6"	R/RX23	R/RX24	R/RX24
2-9/16"	R/RX26	R/RX27	R/RX27
3-1/8"	R/RX31	R/RX31	R/RX35
4-1/16"	R/RX37	R/RX37	R/RX39
5-1/8"	R/RX41	R/RX41	R/RX44
7-1/16"	R/RX45	R/RX45	R/RX46
9"	R/RX49	R/RX49	R/RX50
11"	R/RX53	R/RX53	R/RX54
13-5/8"	R/RX57	R/RX57	-
16-3/4"	R/RX65	R/RX66	-
20-3/4"	-	R/RX74	-
21-1/4"	R/RX73	-	-

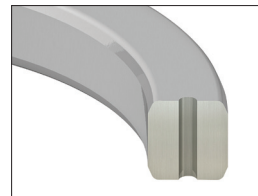
**Model R or RX** (For flanges in accordance with ASME B16.47 series A (MSS-SP44))

Pipe Size	Ring Number at Pressure Rating (lbs)	
	300-600	900
26"	R93	R100
28"	R94	R101
30"	R95	R102
32"	R96	R103
34"	R97	R104
36"	R98	R105

# Ring Type Joint Gaskets

## BX Series

BX series ring type joint gaskets can only be used on API 6BX flanges. BX style are available in sizes reaching 20,000 PSI. Available in low carbon steel, stainless steel 304 and stainless steel 316. BX series features a pressure relief vent.



BX

Pipe Size	Ring Number at Pressure Rating (lbs)					
	2000	3000	5000	10000	15000	20000
1-11/16"	-	-	-	BX150	BX150	-
1-13/16"	-	-	-	BX151	BX151	BX151
2-1/16"	-	-	-	BX152	BX152	BX152
2-9/16"	-	-	-	BX153	BX153	BX153
3-1/16"	-	-	-	BX154	BX154	BX154
4-1/16"	-	-	-	BX155	BX155	BX155
5-1/8"	-	-	-	BX169	BX169	-
7-1/16"	-	-	-	BX156	BX156	BX156
9"	-	-	-	BX157	BX157	BX157
11"	-	-	-	BX158	BX158	BX158
13-5/8"	-	-	BX160	BX159	BX159	BX159
16-3/4"	-	-	BX162	BX162	-	-
18-3/4"	-	-	BX163	BX164	BX164	-
21-1/4"	-	-	BX165	BX166	-	-
26-3/4"	BX167	BX168	-	-	-	-
30"	BX303	BX303	-	-	-	-

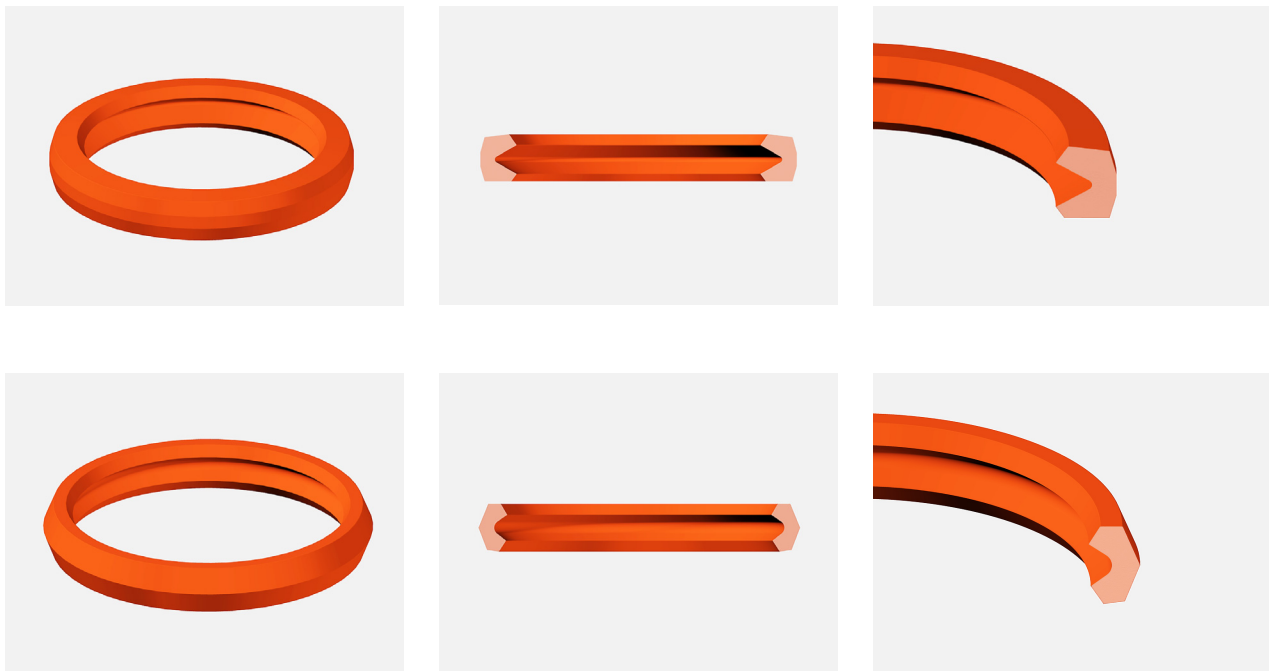
# Ring Type Joint Gaskets

---

## Rapid Seal Manufacturing

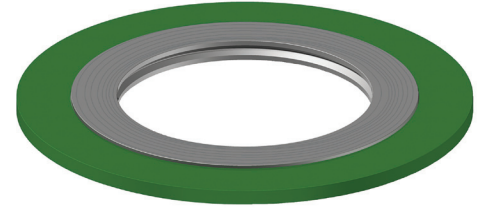
Hi-Tech Seals rapid seal division manufactures polyurethane ring joint gaskets for application testing. The polyurethane ring joint gaskets are an effective and non-damaging method for testing your gland before use. The unique shaped profile energizes the seal in the groove under pressure, replicating a stainless steel R, RX or BX ring joint gasket. Hi-Tech Seals polyurethane test gaskets last up to 100 test runs at 15,000 PSI.

## Profiles



# Spiral Wound Gaskets

Spiral wound gaskets are designed for ASME B 16.20, ANSI B 16.5 and BS 1560 flanges. Spiral wound gaskets are available for pressures range from 150 to 2500 PSI. Custom filler, windling strip and guide ring material are available upon request.



## Winding Materials

Stainless Steel 304 and Stainless Steel 316

## Filler Materials:

Graphite, PTFE

## Guide Ring and Inner Ring Material.

Stainless Steel 304 and Stainless Steel 316

Additional materials available upon request.

## ASME B16.20 for ASME B16.5 Flanges

Pipe Size	Gasket Inside Diameter							Outside Diameter of Sealing Element		Outer Diameter of Centering Ring						
	150	300	400	600	900	1500	2500	150,300 400,600	900,1500 2500	150	300	400	600	900	1500	2500
1/4"	1/2"	1/2"	1/2"	1/2"	-	-	-	7/8"	-	1-3/4"	1-3/4"	1-3/4"	1-3/4"	-	-	-
1/2"	3/4"	3/4"	3/4"	3/4"	3/4"	3/4"	3/4"	1-1/4"	1-1/4"	1-7/8"	2-1/8"	2-1/8"	2-1/8"	2-1/2"	2-1/2"	2-3/4"
3/4"	1"	1"	1"	1"	1"	1"	1"	1-9/16"	1-9/16"	2-1/4"	2-5/8"	2-5/8"	2-5/8"	2-3/4"	2-3/4"	3"
1"	1-1/4"	1-1/4"	1-1/4"	1-1/4"	1-1/4"	1-1/4"	1-1/4"	1-7/8"	1-7/8"	2-5/8"	2-7/8"	2-7/8"	2-7/8"	3-1/8"	3-1/8"	3-3/8"
1-1/4"	1-7/8"	1-7/8"	1-7/8"	1-7/8"	1-9/16"	1-9/16"	1-9/16"	2-3/8"	2-3/8"	3"	3-1/4"	3-1/4"	3-1/4"	3-1/2"	3-1/2"	4-1/8"
1-1/2"	2-1/8"	2-1/8"	2-1/8"	2-1/8"	1-7/8"	1-7/8"	1-7/8"	2-3/4"	2-3/4"	3-3/8"	3-3/4"	3-3/4"	3-3/4"	3-7/8"	3-7/8"	4-5/8"
2"	2-3/4"	2-3/4"	2-3/4"	2-3/4"	2-5/16"	2-5/16"	2-5/16"	3-3/8"	3-3/8"	4-1/8"	4-3/8"	4-3/8"	4-3/8"	5-5/8"	5-5/8"	5-3/4"
2-1/2"	3-1/4"	3-1/4"	3-1/4"	3-1/4"	2-3/4"	2-3/4"	2-3/4"	3-7/8"	3-7/8"	4-7/8"	5-1/8"	5-1/8"	5-1/8"	6-1/2"	6-1/2"	6-5/8"
3"	4"	4"	4"	4"	3-3/4"	3-5/8"	3-5/8"	4-3/4"	4-3/4"	5-3/8"	5-7/8"	5-7/8"	5-7/8"	6-5/8"	6-7/8"	7-3/4"
3-1/2"	4-1/2"	4-1/2"	4-1/8"	4-1/8"	4-1/8"	4-1/8"	-	5-1/4"	5-1/4"	6-3/8"	6-1/2"	6-3/8"	6-3/8"	7-1/2"	7-3/8"	-
4"	5"	5"	4-3/4"	4-3/4"	4-3/4"	4-5/8"	4-5/8"	5-7/8"	5-7/8"	6-7/8"	7-1/8"	7"	7-5/8"	8-1/8"	8-1/4"	9-1/4"
4-1/2"	5-1/2"	5-1/2"	5-5/16"	5-5/16"	5-5/16"	5-5/16"	-	6-1/2"	6-1/2"	7"	7-3/4"	7-5/8"	8-1/4"	9-3/8"	9-1/8"	-
5"	6-1/8"	6-1/8"	5-13/16"	5-13/16"	5-13/16"	5-5/8"	5-5/8"	7"	7"	7-3/4"	8-1/2"	8-3/8"	9-1/2"	9-3/4"	10"	11"
6"	7-3/16"	7-3/16"	6-7/8"	6-7/8"	6-7/8"	6-3/4"	6-3/4"	8-1/4"	8-1/4"	8-3/4"	9-7/8"	9-3/4"	10-1/2"	11-3/8"	11-1/8"	12-1/2"
8"	9-3/16"	9-3/16"	8-7/8"	8-7/8"	8-3/4"	8-1/2"	8-1/2"	10-3/8"	10-1/8"	11"	12-1/8"	12"	12-5/8"	14-1/8"	13-7/8"	15-1/4"
10"	11-5/16"	11-5/16"	10-13/16"	10-13/16"	10-7/8"	10-1/2"	10-5/8"	12-1/2"	12-1/4"	13-3/8"	14-1/4"	14-1/8"	15-3/4"	17-1/8"	17-1/8"	18-3/4"
12"	13-3/8"	13-3/8"	12-7/8"	12-7/8"	12-3/4"	12-3/4"	12-1/2"	14-3/4"	14-1/2"	16-1/8"	16-5/8"	16-1/2"	18"	19-5/8"	20-1/2"	21-5/8"
14"	14-5/8"	14-5/8"	14-1/4"	14-1/4"	14"	14-1/4"	-	16"	15-3/4"	17-3/4"	19-1/8"	19"	19-3/8"	20-1/2"	22-3/4"	-
16"	16-5/8"	16-5/8"	16-1/4"	16-1/4"	16-1/4"	16"	-	18-1/4"	18"	20-1/4"	21-1/4"	21-1/8"	22-1/4"	22-5/8"	25-1/4"	-
18"	18-11/16"	18-11/16"	18-1/2"	18-1/2"	18-1/4"	18-1/4"	-	20-3/4"	20-1/2"	21-5/8"	23-1/2"	23-3/8"	24-1/8"	25-1/8"	27-3/4"	-
20"	20-11/16"	20-11/16"	20-1/2"	20-1/2"	20-1/2"	20-1/4"	-	22-3/4"	22-1/2"	23-7/8"	25-3/4"	25-1/2"	26-7/8"	27-1/2"	29-3/4"	-
24"	24-3/4"	24-3/4"	24-3/4"	24-3/4"	24-3/4"	24-1/4"	-	27"	26-3/4"	28-1/4"	30-1/2"	30-1/4"	31-1/8"	33"	35-1/2"	-



### Head Office:

9211 - 41 Avenue NW | Edmonton, AB | T6E 6R5

Ph: 780.438.6055 | Fax: 780.434.5866 | Email: [info@hitechseals.com](mailto:info@hitechseals.com)

Toll Free Ph: 1.800.661.6055 | Toll Free Fax: 1.800.465.5866

### Hi-Tech Seals Branches:

Bay #3, 5940 - 30 St. SE | Calgary, AB | T2C 1X8 | Ph: 403.720.2856 | Fax: 403.279.2662

445 Egesz St. | Winnipeg, MB | R2R 2V5 | Ph: 204.775.7881 | Fax: 204.775.7954

1180 Kerrisdale Blvd; Unit #8 | Newmarket, ON | L3Y 8Z9 | Ph: 905.953.9666 | Fax: 905.953.8739

1450 Rue Nobel, Suite #20 | Boucherville, QC | J4B 5H3 | Ph: 450.655.7325 | Fax: 450.655.7359

### Hi-Tech Gaskets:

8760 50 Ave NW | Edmonton, AB | T6E 5K8 | Ph: 780.439.4894 | Fax: 780.436.9502