



Materials	Temp. Range	
Low Density Polyethylene	-70°C	to 80°C
High Density Polyethylene	-70°C	to 80°C
Nylon	-30°C	to 93°C



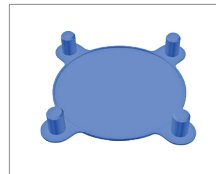
Caps & Plugs (CP)



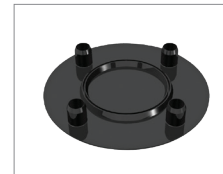
Hydraulic Fitting Plugs (HF)



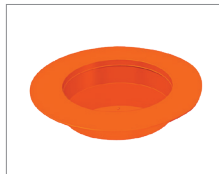
Bolted Flange Protector (BFP)



Stud-hole Flange Protector (FC)



Stud-hole Flange Protector (FC)



Valve-Flange Protector (FP)



Tool Joint Protector (TJP)



Sucker Rod Cap (SR) & Plugs (FPS)



EUE

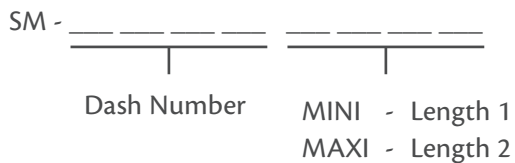


Sleeve Mesh (SM)

Product Description

Our protector products are excellent for preventing damage to equipment during storage or transport. Additional protector products are available upon request.

Sleeve Mesh



Protectors

Part Number	I.D. Fits	Colour	Feet/Unit
SM 014MINI	1/4 to 1/2	Yellow	650
SM 014MAXI			3000
SM 05MINI	1/2 to 1	Blue	550
SM 05MAXI			2750
SM 10MINI	1 to 1 - 1/2	Red	340
SM 10MAXI			1700
SM 1000MINI	1 to 2	Yellow	500
SM 1000MAXI			2500
SM 15MINI	1 - 1/2 to 2	Black	180
SM 15MAXI			900
SM 20MINI	2 to 2 - 1/2	White	160
SM 20MAXI			800
SM 2000MINI	2 to 4	Red	300
SM 2000MAXI			1500
SM 25MINI	2 - 1/2 to 3	Yellow	120
SM 25MAXI			600
SM 30MINI	3 to 4	Green	90
SM 30MAXI			450
SM 40MINI	4 to 5	Orange	80
SM 40MAXI			400
SM 50MINI	5	Brown	50
SM 50MAXI			400
SM 60MINI	6	Blue	50
SM 70MINI	7	Clear	40

Composed of Nylon weaved into a strong diamond pattern.