



Rubber & Plastic Machining

Our in-house rubber & plastic machining facilities are located in Edmonton, AB., Calgary, AB., Winnipeg, MB., and Newmarket, ON. Customers can select from one of our pre-programmed seal profiles or create a custom seal by providing samples, drawings, or existing metal dimensions. Machined parts can save companies time, money, and the inconvenience of searching for unique parts.

Rapid Prototyping

While working with us, customers gain access to our experienced engineering, drafting, and machining staff for additional support. Our in-house machining department is capable of machining prototypes quickly and without expensive tooling. This allows us to provide prototype parts for testing purposes, typically within the same week.

Capabilities

We have several CNC lathes, multiple NC machines, milling, and live tooling capabilities at our disposal. We are capable of supplying custom parts with profiles ranging from 1/4" (6mm) ID up to 72" (1829mm) OD.

In-house, we can machine plastic parts with a tolerance of ± 0.005 for dimensions up to 5". For dimensions above 5" add an additional ± 0.001 for each 1" increment. Our machined elastomers, including thermoplastic elastomers, are available in 85 Shore A durometer or harder, with select materials available in 75 shore A durometer. Our tolerance capabilities vary depending on the parts' dimensions. Refer to table on the right for more information.

Dimensions	Tolerance
Up to 5½"	± 0.005 "
Above 5½" - up to 8"	± 0.010 "
Above 8" - up to 10"	± 0.012 "
Above 10" - up to 14"	± 0.015 "
Above 14"	± 0.030 "



QUADRANT

We work closely with industry leading plastic manufacturers, such as Quadrant Plastics, to create innovative and tailored solutions. Quadrant offers unique compounds, including:

- Ketron® PEEK
- Duratron® PAI
- Fluorosint® PTFE
- Ertalyte® PET-P
- Nylatron® PA
- Techtron® PPS

Materials

We stock rods and tubes of plastic and elastomer for production or direct sales.

Plastics:

- Nylon
- Acetal
- Hytrel®
- UHMW
- Ekonol®
- PTFE
 - Virgin
 - Bronze filled
 - Carbon filled
 - Carbon/Graphite filled
 - Glass filled
 - Moly/Glass filled
- PEEK
 - Virgin
 - Carbon filled
 - Glass filled

Elastomers:

- Nitrile
- Aflas® FEPM
- Chloroprene
- Urethane
- Hydrogenated Nitrile
- Ethylene Propylene
- Viton™/Fluorocarbon



Rapid Seal

Rapid Seal Profiles

We have access to over 120+ pre-programmed profiles. Customers can select from these profiles, or create a custom seal by providing a sample, drawing, or existing metal dimensions. After selecting a pre-programmed seal profile, we will apply the given dimensions to the profile to produce the part.

Contact us for more information and a complete listing of available materials.



Rod Seals



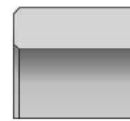
Piston Seals



Lip Seals



Wipers



Guide Rings



Back-Up Rings



Gaskets