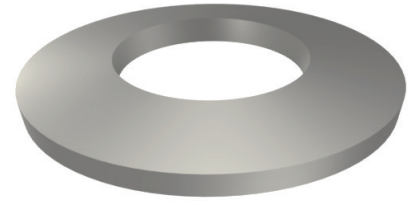
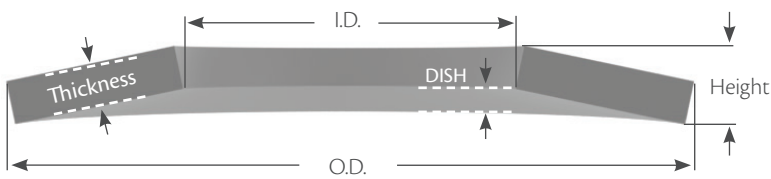


Belleville Disc Springs



Product Description

Belleville Disc Springs, also referred to as Belleville washers, feature a distinctive conical shape with a center hole, used in both static and dynamic applications. Their unique shape allows them to support high loads within compact spaces with relatively minor deflections. Belleville Disc Springs are commonly used to secure bolted connections, stabilize valve assemblies, absorb shocks, improve vibration damping, and endure load cycling across various industries including:

- Oil and Gas
- Industrial Heavy Equipment
- Construction
- Automotive
- Mining
- Electrical
- Transportation
- Machinery
- Aerospace

Stacking

Belleville Disc Springs can be stacked in parallel, series, or a combination of both to increase load capacity or deflection. Parallel stacking increases load while maintaining deflection. Series stacking increases deflection while maintaining load. Combining parallel and series increases both load and deflection.



Parallel

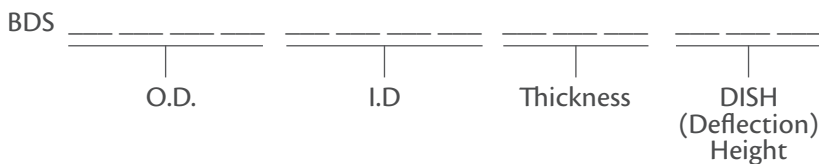


Series



Parallel and Series

Part Numbers:



Example: BDS 3930 2855 155 060 – Belleville Disc Springs, 3.930” O.D., 2.855” I.D., 0.155” Thick, 0.060” DISH (Deflection) Height