



Materials	Temp. Range	
Low Density Polyethylene	-70°C	to 80°C
High Density Polyethylene	-70°C	to 80°C
Nylon	-30°C	to 93°C



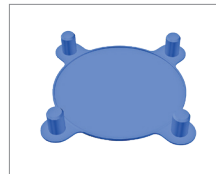
Caps & Plugs (CP)



Hydraulic Fitting Plugs (HF)



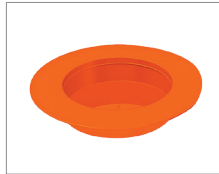
Bolted Flange Protector (BFP)



Stud-hole Flange Protector (FC)



Stud-hole Flange Protector (FC)



Valve-Flange Protector (FP)



Tool Joint Protector (TJP)



Sucker Rod Cap (SR) & Plugs (FPS)



EUE

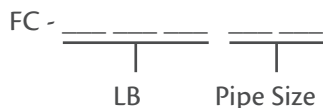
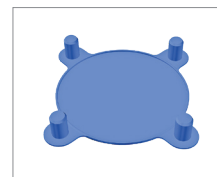


Sleeve Mesh (SM)

Product Description

Our protector products are excellent for preventing damage to equipment during storage or transport. Additional protector products are available upon request.

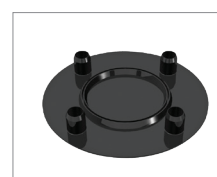
Stud-Hole Flange Protectors



Pressure represents ASA standard. For additional sizes and API pressure ratings, please contact a Hi-Tech Seals representative.

Part Number	LB	Nominal Pipe Size
FC 1501	150	1"
FC 15015	150	1 - 1/2"
FC 1502	150	2"
FC 1503	150	3"
FC 1504	150	4"
FC 1506	150	6"
FC 1508	150	8"
FC 15010	150	10"
FC 15012	150	12"

Part Number	LB	Nominal Pipe Size
FC 3001	300	1"
FC 30015	300	1 - 1/2"
FC 3002	300	2"
FC 3003	300	3"
FC 3004	300	4"
FC 3006	300	6"
FC 30010	300	10"
FC 30012	300	12"



Part Number	LB	Nominal Pipe Size
FC 3008	300	8"
FC 6002	600	2"
FC 6004	600	4"
FC 6006	600	6"
FC 6008	600	8"
FC 60010	600	10"

Part Number	LB	Nominal Pipe Size
FC 60012	600	12"
FC 9003	900	3"
FC 9004	900	4"
FC 9006	900	6"
FC 15002	1500	2"
FC 15003	1500	3"