



Materials	Temp. Range	
Low Density Polyethylene	-70°C	to 80°C
High Density Polyethylene	-70°C	to 80°C
Nylon	-30°C	to 93°C



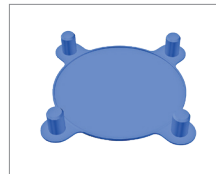
Caps & Plugs (CP)



Hydraulic Fitting Plugs (HF)



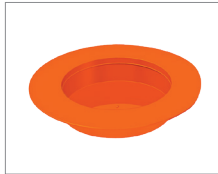
Bolted Flange Protector (BFP)



Stud-hole Flange Protector (FC)



Stud-hole Flange Protector (FC)



Valve-Flange Protector (FP)



Tool Joint Protector (TJP)



Sucker Rod Cap (SR) & Plugs (FPS)



EUE

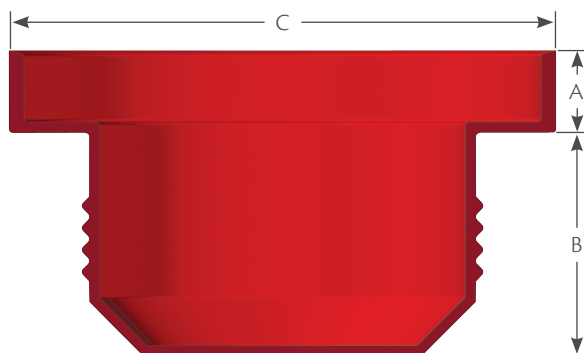


Sleeve Mesh (SM)

Product Description

Our protector products are excellent for preventing damage to equipment during storage or transport. Additional protector products are available upon request.

Hydraulic Fittings



HF -
 |
 Dash Number

Composed of high density polyethylene.

Part Number	Thread Size	Suited For		Dimensions		
		Tubing Size	SAE/JIC Fitting	A	B	C
HF 4	3/8 - 24	3/16	3	0.180	0.460	0.560
HF 6	7/16 - 20	1/4	4	0.220	0.500	0.720
HF 8	1/2 - 20	5/16	5	0.250	0.530	0.810
HF 10	9/16 - 18	3/8	6	0.280	0.530	0.880
HF 11	5/8 - 18	3/8	-	0.250	0.590	0.940
HF 12	3/4 - 16	1/2	8	0.280	0.750	1.060
HF 14	7/8 - 14	5/8	10	0.280	0.840	1.250
HF 16	1 1/16 - 12	3/4	12	0.250	0.860	1.410
HF 17	1 1/16 - 14	3/4	-	0.250	0.860	1.410
HF 18	1 3/16 - 12	7/8	-	0.250	0.930	1.500
HF 20	1 5/16 - 12	1	16	0.250	0.910	1.750
HF 22	1 1/2 - 12	-	-	0.310	0.930	1.810
HF 24	1 5/8 - 12	1 - 1/4	-	0.340	0.940	2.220
HF 26	1 3/4 - 12	-	-	0.340	0.970	2.310
HF 28	1 7/8 - 12	1 - 1/2	-	0.380	1.060	2.470
HF 30	2 1/4 - 12	1 - 3/4	-	0.380	1.310	2.750
HF 32	2 1/2 - 12	2	-	0.380	1.310	3.090