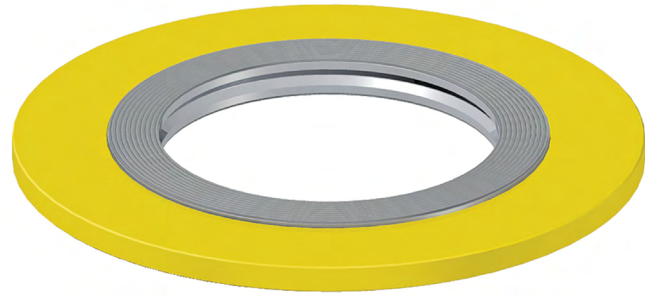
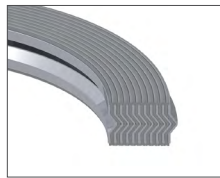


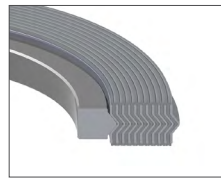
Winding Materials		Temp. Range	
Stainless Steel 304	-200°C	to	420°C
Stainless Steel 316L	-200°C	to	460°C
Filler Materials			
Graphite	Up	to	523°C
PTFE	Up	to	260°C
Centering Ring			
Carbon Steel	Up	to	538°C
Inner Ring Materials			
Stainless Steel 304	-200°C	to	420°C
Stainless Steel 316	-200°C	to	460°C



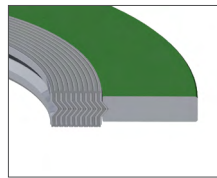
* Stainless steel 316 and 304 can exceed their continuous operating temperatures, up to 760°C, for short-term intervals. However, this may result in intergranular corrosion.



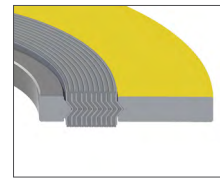
Winding



Winding w/ Inner Ring



Winding w/ Centering Ring

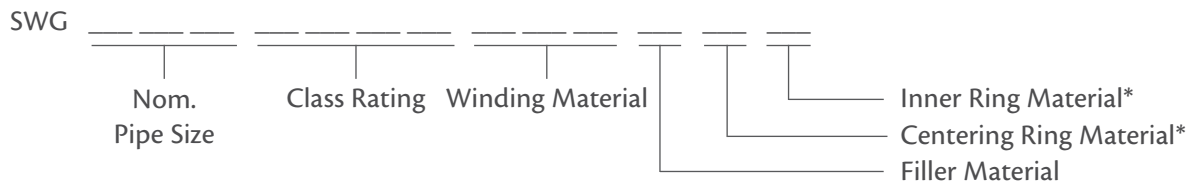


Winding w/ Inner & Centering Ring

Product Description

We supply precision-engineered spiral wound gaskets that are approved by Shell, Valero, Chevron, Phillips 66, and MRC. They are designed as per ASME B16.20 to suit flange standards ASME B16.5 and are available for classes 150 to 2500. Our spiral wound gaskets are made with a superior-grade graphite filler that is in accordance with Shell specifications, MESC SPE 85/203 SEPTEMBER 2012. Custom filler, winding strip, guide rings, and inner ring materials are available upon request.

Part Numbers:



Example: SWG 26 150 316 G C I – Spiral Wound Gasket, 26" Nom. Pipe, 150#, Stainless Steel 316 Winding Material, Graphite Filler, Carbon Steel Centering Ring, Stainless Steel 316 Inner Ring

* If there is no internal ring, or centering ring then the respective materials will not be listed.

Selecting A Spiral Wound Gasket

Applications

Service:

Raised Face

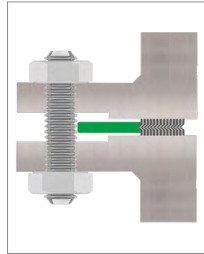
Flat Face

Male & Female

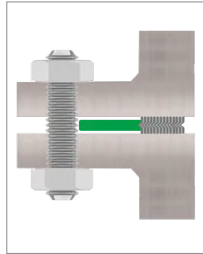
Tongue & Groove

Flat Face to Recessed

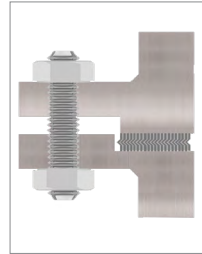
General Duty



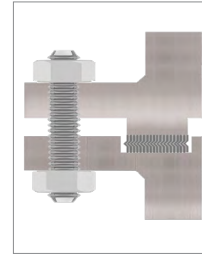
Winding w/ Centering Ring



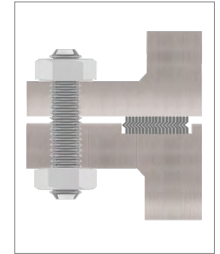
Winding w/ Centering Ring



Winding

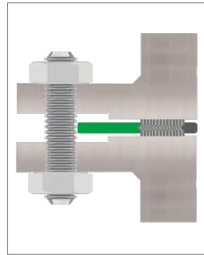


Winding

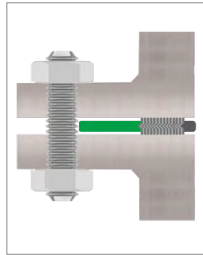


Winding

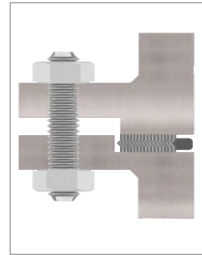
**High-Pressure
High-Temperature
Fluctuating Pressures
SWG w/ PTFE
Reinforcements**



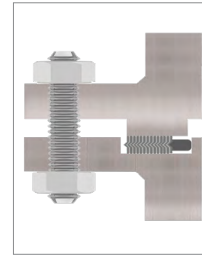
Winding w/ Inner & Centering Ring



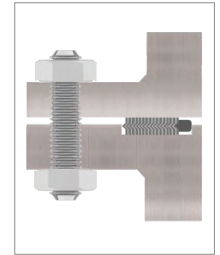
Winding w/ Inner & Centering Ring



Winding w/ Inner Ring



Winding w/ Inner Ring

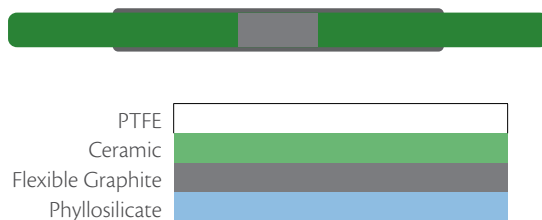


Winding w/ Inner Ring

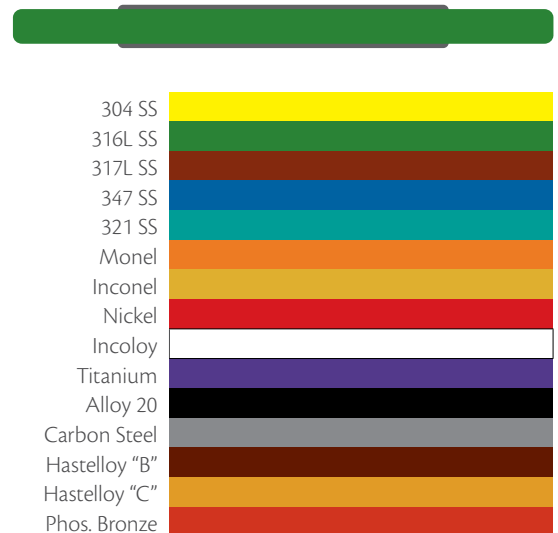
Colour Coding

Centering rings are painted in accordance with ASME B16.20. The solid colour on the centering ring indicates the metallic winding material. The stripped colour indicates the non-metallic reinforcements used between the metal windings.

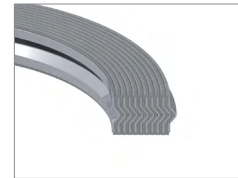
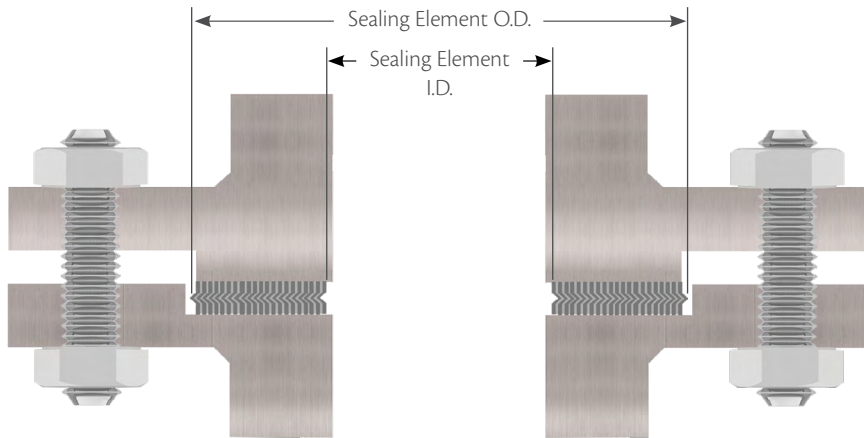
Non-Metallic Filler



Winding Material



Winding Pipes Under 24"



Spiral Wound Gaskets

ASME B16.5 & BS 1560 Flanges

Nominal Pipe Size	Male and Female				Large Tongue Groove		Small Tongue and Groove	
	Sealing Element 150-1500		Sealing Element Class 2500		Sealing Element Class 150-2500		Sealing Element 150-2500	
	I.D.	O.D.	I.D.	O.D.	I.D.	O.D.	I.D.	O.D.
1/4	1/2	1	-	-	1/2	1	-	-
1/2	1	1 3/8	13/16	1 3/8	1	1 3/8	1	1 3/8
3/4	1 5/16	1 11/16	1 1/16	1 11/16	1 5/16	1 11/16	1 5/16	1 11/16
1	1 1/2	2	1 1/4	2	1 1/2	2	1 1/2	1 7/8
1 1/4	1 7/8	2 1/2	1 5/8	2 1/2	1 7/8	2 1/2	1 7/8	2 1/4
1 1/2	2 1/8	2 7/8	1 7/8	2 7/8	2 1/8	2 7/8	2 1/8	2 1/2
2	2 7/8	3 5/8	2 3/8	3 5/8	2 7/8	3 5/8	2 7/8	3 1/4
2 1/2	3 3/8	4 1/8	3	4 1/8	3 3/8	4 1/8	3 3/8	3 3/4
3	4 1/4	5	3 3/4	5	4 1/8	5	4 1/4	4 5/8
3 1/2	4 3/4	5 1/2	-	-	4 3/4	5 1/2	4 3/4	5 1/8
4	5 3/16	6 3/16	4 3/4	6 3/16	5 3/16	6 3/16	5 3/16	5 11/16
4 1/2	5 11/16	6 3/4	-	-	5 11/16	6 3/4	-	-
5	6 5/16	7 5/16	5 3/4	7 5/16	6 5/16	7 5/16	6 5/16	6 13/16
6	7 1/2	8 1/2	6 3/4	8 1/2	7 1/2	8 1/2	7 1/2	8
8	9 3/8	10 5/8	8 3/4	10 5/8	9 3/8	10 5/8	9 3/8	10
10	11 1/4	12 3/4	10 3/4	12 3/4	11 1/4	12 3/4	11 1/4	12
12	13 1/2	15	13	15	13 1/2	15	13 1/2	14 1/4
14	14 3/4	16 1/4	-	-	14 3/4	16 1/4	14 3/4	15 1/2
16	17	18 1/2	-	-	17	18 1/2	16 3/4	17 5/8
18	19 1/4	21	-	-	19 1/4	21	19 1/4	20 1/8
20	21	23	-	-	21	23	21	22
24	25 1/4	27 1/4	-	-	25 1/4	27 1/4	25 1/4	26 1/4

Large Tongue and Groove Flanges:

- 1/2" sizes in class 150, 300, 400, 600, 900, 1500 and 2500 are interchangeable.

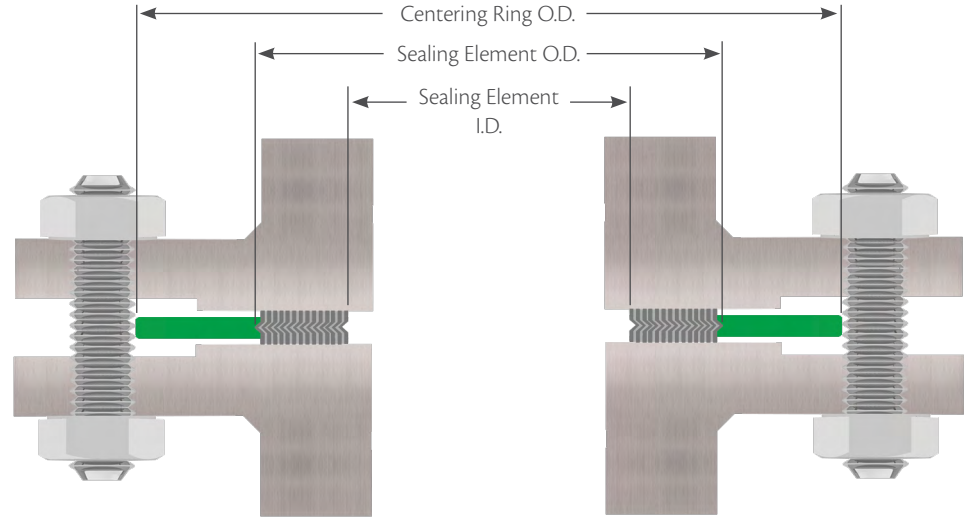
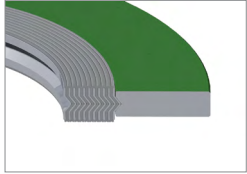
Male & Female and Large Tongue & Groove Flanges:

- Class 300, 400, 600 are interchangeable within their size category.
- Class 900 and 1500 are interchangeable within their size category.
- 1/4" sizes in class 150 are interchangeable.

Small Tongue and Groove Flanges:

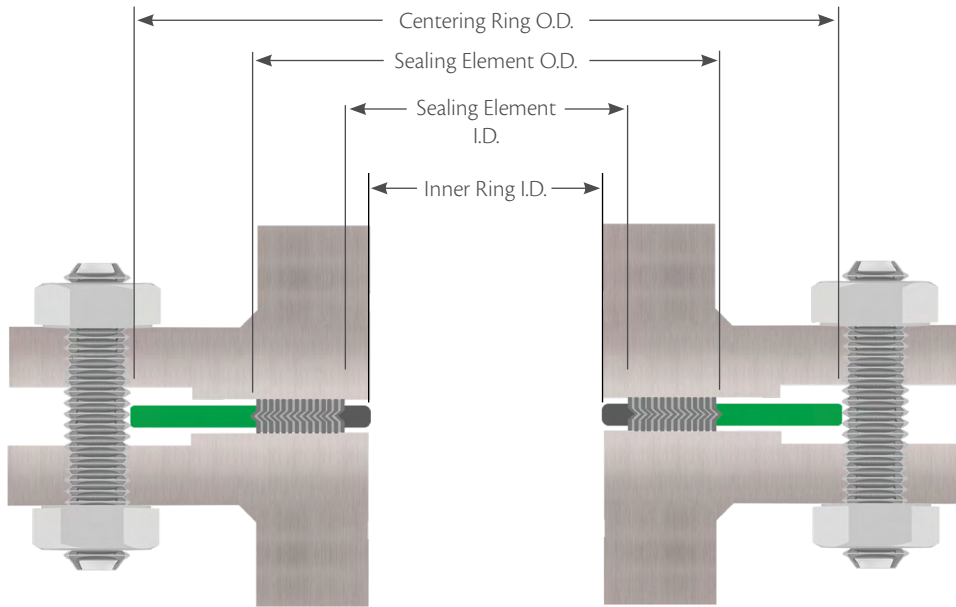
- Classes 300 through 2500 are interchangeable within their specific size category.
- 3/4" sizes are interchangeable with large male & female and large tongue and groove gaskets within their specific pressure rating.
- 1/2" sizes are interchangeable within large male & female and large tongue and groove gaskets within their specific pressure rating.

Winding With Centering Ring Pipes Under 24"

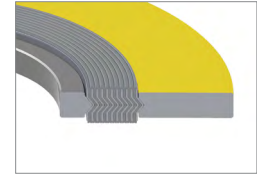


ASME B16.20 for ASME B16.5 Flanges

Nom. Pipe Size	I.D. of Sealing Element						O.D. of Sealing Element			O.D. of Centering Ring						
	150	300	400	600	900	1500	2500	150,300 400,600	900,1500 2500	150	300	400	600	900	1500	2500
1/4	1/2	1/2	1/2	1/2	-	-	-	7/8	-	1 3/4	1 3/4	1 3/4	1 3/4	-	-	-
1/2	3/4	3/4	3/4	3/4	3/4	3/4	3/4	1 1/4	1 1/4	1 7/8	2 1/8	2 1/8	2 1/8	2 1/2	2 1/2	2 3/4
3/4	1	1	1	1	1	1	1	1 9/16	1 9/16	2 1/4	2 5/8	2 5/8	2 5/8	2 3/4	2 3/4	3
1	1 1/4	1 1/4	1 1/4	1 1/4	1 1/4	1 1/4	1 1/4	1 7/8	1 7/8	2 5/8	2 7/8	2 7/8	2 7/8	3 1/8	3 1/8	3 3/8
1 1/4	1 7/8	1 7/8	1 7/8	1 7/8	1 9/16	1 9/16	1 9/16	2 3/8	2 3/8	3	3 1/4	3 1/4	3 1/4	3 1/2	3 1/2	4 1/8
1 1/2	2 1/8	2 1/8	2 1/8	2 1/8	1 7/8	1 7/8	1 7/8	2 3/4	2 3/4	3 3/8	3 3/4	3 3/4	3 3/4	3 7/8	3 7/8	4 5/8
2	2 3/4	2 3/4	2 3/4	2 3/4	2 5/16	2 5/16	2 5/16	3 3/8	3 3/8	4 1/8	4 3/8	4 3/8	4 3/8	5 5/8	5 5/8	5 3/4
2 1/2	3 1/4	3 1/4	3 1/4	3 1/4	2 3/4	2 3/4	2 3/4	3 7/8	3 7/8	4 7/8	5 1/8	5 1/8	5 1/8	6 1/2	6 1/2	6 5/8
3	4	4	4	4	3 3/4	3 5/8	3 5/8	4 3/4	4 3/4	5 3/8	5 7/8	5 7/8	5 7/8	6 5/8	6 7/8	7 3/4
3 1/2	4 1/2	4 1/2	4 1/8	4 1/8	4 1/8	4 1/8	-	5 1/4	5 1/4	6 3/8	6 1/2	6 3/8	6 3/8	7 1/2	7 3/8	-
4	5	5	4 3/4	4 3/4	4 3/4	4 5/8	4 5/8	5 7/8	5 7/8	6 7/8	7 1/8	7	7 5/8	8 1/8	8 1/4	9 1/4
4 1/2	5 1/2	5 1/2	5 5/16	5 5/16	5 5/16	5 5/16	-	6 1/2	6 1/2	7	7 3/4	7 5/8	8 1/4	9 3/8	9 1/8	-
5	6 1/8	6 1/8	5 13/16	5 13/16	5 13/16	5 5/8	5 5/8	7	7	7 3/4	8 1/2	8 3/8	9 1/2	9 3/4	10	11
6	7 3/16	7 3/16	6 7/8	6 7/8	6 7/8	6 3/4	6 3/4	8 1/4	8 1/4	8 3/4	9 7/8	9 3/4	10 1/2	11 3/8	11 1/8	12 1/2
8	9 3/16	9 3/16	8 7/8	8 7/8	8 3/4	8 1/2	8 1/2	10 3/8	10 1/8	11	12 1/8	12	12 5/8	14 1/8	13 7/8	15 1/4
10	11 5/16	11 5/16	10 13/16	10 13/16	10 7/8	10 1/2	10 5/8	12 1/2	12 1/4	13 3/8	14 1/4	14 1/8	15 3/4	17 1/8	17 1/8	18 3/4
12	13 3/8	13 3/8	12 7/8	12 7/8	12 3/4	12 3/4	12 1/2	14 3/4	14 1/2	16 1/8	16 5/8	16 1/2	18	19 5/8	20 1/2	21 5/8
14	14 5/8	14 5/8	14 1/4	14 1/4	14	14 1/4	-	16	15 3/4	17 3/4	19 1/8	19	19 3/8	20 1/2	22 3/4	-
16	16 5/8	16 5/8	16 1/4	16 1/4	16 1/4	16	-	18 1/4	18	20 1/4	21 1/4	21 1/8	22 1/4	22 5/8	25 1/4	-
18	18 11/16	18 11/16	18 1/2	18 1/2	18 1/4	18 1/4	-	20 3/4	20 1/2	21 5/8	23 1/2	23 3/8	24 1/8	25 1/8	27 3/4	-
20	20 11/16	20 11/16	20 1/2	20 1/2	20 1/2	20 1/4	-	22 3/4	22 1/2	23 7/8	25 3/4	25 1/2	26 7/8	27 1/2	29 3/4	-
24	24 3/4	24 3/4	24 3/4	24 3/4	24 3/4	24 1/4	-	27	26 3/4	28 1/4	30 1/2	30 1/4	31 1/8	33	35 1/2	-



Inner Ring Dimensions Pipes Under 24"



Spiral Wound Gaskets

Standard I.D. of Inner Rings

Nom. Pipe Size	Pressure Class						
	150	300	400	600	900	1500	2500
1/2	0.56	0.56	0.56	0.56	0.56	0.56	0.56
3/4	0.81	0.81	0.81	0.81	0.81	0.81	0.81
1	1.06	1.06	1.06	1.06	1.06	1.06	1.06
1 1/4	1.50	1.50	1.50	1.50	1.31	1.31	1.31
1 1/2	1.75	1.75	1.75	1.75	1.63	1.63	1.63
2	2.19	2.19	2.19	2.19	2.06	2.06	2.06
2 1/2	2.62	2.62	2.62	2.62	2.50	2.50	2.50
3	3.19	3.19	3.19	3.19	3.10	3.10	3.10
4	4.19	4.19	4.04	4.04	4.04	3.85	3.85
5	5.19	5.19	5.05	5.05	5.05	4.90	4.90
6	6.19	6.19	6.10	6.10	6.10	5.80	5.80
8	8.50	8.50	8.10	8.10	7.75	7.75	7.75
10	10.56	10.56	10.05	10.05	9.69	9.69	9.69
12	12.50	12.50	12.10	12.10	11.50	11.50	11.50
14	13.75	13.75	13.50	13.50	12.63	12.63	–
16	15.75	15.75	15.35	15.35	14.75	14.50	–
18	17.69	17.69	17.25	17.25	16.75	16.75	–
20	19.69	19.69	19.25	19.25	19.00	18.75	–
24	23.75	23.75	23.25	23.25	23.25	22.75	–

Series A Flanges 22" and Over

Nom. Pipe Size	Class 150				Class 300				Class 400			
	Inner Ring I.D.	Sealing Element		Centering Ring O.D.	Inner Ring I.D.	Sealing Element		Centering Ring O.D.	Inner Ring I.D.	Sealing Element		Centering Ring O.D.
	I.D.	I.D.	O.D.		I.D.	I.D.	O.D.		I.D.	I.D.	O.D.	
22	–	22 3/4	24	26	–	22 3/4	24 3/4	27 3/4	–	22 3/4	24 3/4	27 5/8
26	25 3/4	26 1/2	27 3/4	30 1/2	25 3/4	27	29	32 7/8	26	27	29	32 3/4
28	27 3/4	28 1/2	29 3/4	32 3/4	27 3/4	29	31	35 3/8	28	29	31	35 1/8
30	29 3/4	30 1/2	31 3/4	34 3/4	29 3/4	31 1/4	33 1/4	37 1/2	29 3/4	31 1/4	33 1/4	37 1/4
32	31 3/4	32 1/2	33 7/8	37	31 3/4	33 1/2	35 1/2	39 5/8	32	33 1/2	35 1/2	39 1/2
34	33 3/4	34 1/2	35 7/8	39	33 3/4	35 1/2	37 1/2	41 5/8	34	35 1/2	37 1/2	41 1/2
36	35 3/4	36 1/2	38 1/8	41 1/4	35 3/4	37 5/8	39 5/8	44	36 1/8	37 5/8	39 5/8	44
38	37 3/4	38 1/2	40 1/8	43 3/4	37 1/2	38 1/2	40	41 1/2	37 1/2	38 1/4	40 1/4	42 1/4
40	39 3/4	40 1/2	42 1/8	45 3/4	39 1/2	40 1/4	42 1/8	43 7/8	39 3/8	40 3/8	42 3/8	44 3/8
42	41 3/4	42 1/2	44 1/4	48	41 1/2	42 1/4	44 1/8	45 7/8	41 3/8	42 3/8	44 3/8	46 3/8
44	43 3/4	44 1/2	46 3/8	50 1/4	43 1/2	44 1/2	46 1/2	48	43 1/2	44 1/2	46 1/2	48 1/2
46	45 3/4	46 1/2	48 3/8	52 1/4	45 3/8	46 3/8	48 3/8	50 1/8	46	47	49	50 3/4
48	47 3/4	48 1/2	50 3/8	54 1/2	47 5/8	48 5/8	50 5/8	52 1/8	47 1/2	49	51	53
50	49 3/4	50 1/2	52 1/2	56 1/2	49	51	53	54 1/4	49 1/2	51	53	55 1/4
52	51 3/4	52 1/2	54 1/2	58 3/8	52	53	55	56 1/4	51 1/2	53	55	57 1/4
54	53 1/2	54 1/2	56 1/2	61	53 1/4	55 1/4	57 1/4	58 3/4	53 1/4	55 1/4	57 1/4	59 3/4
56	55 1/2	56 1/2	58 1/2	63 1/4	55 1/4	57 1/4	59 1/4	60 3/4	55 1/4	57 1/4	59 1/4	61 3/4
58	57 1/2	58 1/2	60 1/2	65 1/2	57	59 1/2	61 1/2	62 3/4	57 1/4	59 1/4	61 1/4	63 3/4
60	59 1/2	60 1/2	62 1/2	67 1/2	60	61 1/2	63 1/2	64 3/4	59 3/4	61 3/4	63 3/4	66 1/4

Nom. Pipe Size	Class 600				Class 900			
	Inner Ring I.D.	Sealing Element		Centering Ring O.D.	Inner Ring I.D.	Sealing Element		Centering Ring O.D.
	I.D.	I.D.	O.D.		I.D.	I.D.	O.D.	
22	–	22 3/4	24 3/4	28 7/8	–	–	–	–
26	25 1/2	27	29	34 1/8	26	27	29	34 3/4
28	27 1/2	29	31	36	28	29	31	37 1/4
30	29 3/4	31 1/4	33 1/4	38 1/4	30 1/4	31 1/4	33 1/4	39 3/4
32	32	33 1/2	35 1/2	40 1/4	32	33 1/2	35 1/2	42 1/4
34	34	35 1/2	37 1/2	42 1/4	34	35 1/2	37 1/2	44 3/4
36	36 1/8	37 5/8	39 5/8	44 1/2	36 1/4	37 3/4	39 3/4	47 1/4
38	37 1/2	39	41	43 1/2	39 3/4	40 3/4	42 3/4	47 1/4
40	39 3/4	41 1/4	43 1/4	45 1/2	41 3/4	43 1/4	45 1/4	49 1/4
42	42	43 1/2	45 1/2	48	43 3/4	45 1/4	47 1/2	51 1/4
44	43 3/4	45 3/4	47 3/4	50	45 1/2	47 1/2	49 1/2	53 7/8
46	45 3/4	47 3/4	49 3/4	52 1/4	48	50	52	56 1/2
48	48	50	52	54 3/4	50	52	54	58 1/2
50	50	52	54	57	–	–	–	–
52	52	54	56	59	–	–	–	–
54	54 1/4	56 1/4	58 1/4	61 1/4	–	–	–	–
56	56 1/4	58 1/4	60 1/4	63 1/2	–	–	–	–
58	58	60 1/2	62 1/2	65 1/2	–	–	–	–
60	60 1/4	62 3/4	64 3/4	68 1/4	–	–	–	–

Series B Flanges 26" and Over

Nom. Pipe Size	Class 75			Class 150				Class 300			
	Sealing Element I.D.	Sealing Element O.D.	Centering Ring O.D.	Inner Ring I.D.	Sealing Element I.D.	Sealing Element O.D.	Centering Ring O.D.	Inner Ring I.D.	Sealing Element I.D.	Sealing Element O.D.	Centering Ring O.D.
26	26 1/4	27	27 7/8	25 3/4	26 1/2	27 1/2	28 9/16	25 3/4	26 1/2	28	30 3/8
28	28 1/4	29 1/8	29 7/8	27 3/4	28 1/2	29 1/2	30 9/16	27 3/4	28 1/2	30	32 1/2
30	30 1/4	31 1/8	31 7/8	29 3/4	30 1/2	31 1/2	32 9/16	29 3/4	30 1/2	32	34 7/8
32	32 1/4	33 1/8	33 7/8	31 3/4	32 1/2	33 1/2	34 11/16	31 3/4	32 1/2	34	37
34	34 1/4	35 1/8	35 7/8	33 3/4	34 1/2	35 3/4	36 13/16	33 3/4	34 1/2	36	39 1/8
36	36 1/4	37 1/4	38 5/16	35 3/4	36 1/2	37 3/4	38 7/8	35 3/4	36 1/2	38	41 1/4
38	-	-	-	37 3/4	38 3/8	39 3/4	41 1/8	38 1/4	39 3/4	41 1/4	43 1/4
40	-	-	-	39 3/4	40 1/4	41 7/8	43 1/8	40 1/4	41 3/4	43 1/4	45 1/4
42	42 1/4	43 1/4	44 5/16	41 3/4	42 1/2	43 7/8	45 1/8	42 3/4	43 3/4	45 1/4	47 1/4
44	-	-	-	43 3/4	44 1/4	45 7/8	47 1/8	44 1/4	45 3/4	47 1/4	49 1/4
46	-	-	-	45 3/4	46 1/2	48 3/16	49 7/16	46 3/8	47 7/8	49 3/8	51 7/8
48	48 3/8	49 1/2	50 1/2	47 3/4	48 1/2	50	51 7/16	48 1/2	49 3/4	51 5/8	53 7/8
50	-	-	-	49 3/4	50 1/2	52 3/16	53 7/16	49 7/8	51 7/8	53 3/8	55 7/8
52	-	-	-	51 3/4	52 1/2	54 3/16	55 7/16	51 7/8	53 7/8	55 3/8	57 7/8
54	54 3/8	55 5/8	56 5/8	53 3/4	54 1/2	56	57 5/8	53 3/4	55 1/4	57 1/4	60 1/4
56	-	-	-	56	56 7/8	58 3/16	59 5/8	56 1/4	58 1/4	60	62 3/4
58	-	-	-	58 3/16	59 1/16	60 3/16	62 3/16	58 7/16	60 7/16	61 15/16	65 3/16
60	60 1/2	61 3/4	62 7/8	60 7/16	61 5/16	62 7/16	64 3/16	61 5/16	62 9/16	64 3/16	67 3/16

Nom. Pipe Size	Class 400				Class 600				Class 900			
	Inner Ring I.D.	Sealing Element I.D.	Sealing Element O.D.	Centering Ring O.D.	Inner Ring I.D.	Sealing Element I.D.	Sealing Element O.D.	Centering Ring O.D.	Inner Ring I.D.	Sealing Element I.D.	Sealing Element O.D.	Centering Ring O.D.
26	25 3/4	26 1/4	27 1/2	29 3/8	25 3/8	26 1/8	28 1/8	30 1/8	26 1/4	27 1/4	29 1/2	33
28	27 5/8	28 1/8	29 1/2	31 1/2	27	27 3/4	29 3/4	32 1/4	28 1/4	29 1/4	31 1/2	35 1/2
30	29 5/8	30 1/8	31 3/4	33 3/4	29 5/8	30 5/8	32 5/8	34 5/8	30 3/4	31 3/4	33 3/4	37 3/4
32	31 1/2	32	33 7/8	35 7/8	31 1/4	32 3/4	34 3/4	36 3/4	33	34	36	40
34	33 1/2	34 1/8	35 7/8	37 7/8	33 1/2	35	37	39 1/4	35 1/4	36 1/4	38 1/4	42 1/4
36	35 3/8	36 1/8	38	40 1/4	35 1/2	37	39	41 1/4	36 1/4	37 1/4	39 1/4	44 1/4
38	37 1/2	38 1/4	40 1/4	42 1/4	37 1/2	39	41	43 1/2	39 3/4	40 3/4	42 3/4	47 1/4
40	39 3/8	40 3/8	42 3/8	44 3/8	39 3/4	41 1/4	43 1/4	45 1/2	41 3/4	43 1/4	45 1/4	49 1/4
42	41 3/8	42 3/8	44 3/8	46 3/8	42	43 1/2	45 1/2	48	43 3/4	45 1/4	47 1/4	51 1/4
44	43 1/2	44 1/2	46 1/2	48 1/2	43 3/4	45 3/4	47 3/4	50	45 1/2	47 1/2	49 1/2	53 7/8
46	46	47	49	50 3/4	45 3/4	47 3/4	49 3/4	52 1/4	48	50	52	56 1/2
48	47 1/2	49	51	53	48	50	52	54 3/4	50	52	54	58 1/2
50	49 1/2	51	53	55 1/4	50	52	54	57	-	-	-	-
52	51 1/2	53	55	57 1/4	52	54	56	59	-	-	-	-
54	53 1/4	55 1/4	57 1/4	59 3/8	54 1/4	56 1/4	58 1/4	61 1/4	-	-	-	-
56	55 1/4	57 1/4	59 1/4	61 3/4	56 1/4	58 1/4	60 1/4	63 1/2	-	-	-	-
58	57 1/4	59 3/4	61 1/4	63 3/4	58	60 1/2	62 1/2	65 1/2	-	-	-	-
60	59 3/4	61 3/4	63 3/4	66 1/4	60 1/4	62 3/4	64 3/4	68 1/4	-	-	-	-