



Materials	Temp. Range	
Low Density Polyethylene	-70°C	to 80°C
High Density Polyethylene	-70°C	to 80°C
Nylon	-30°C	to 93°C



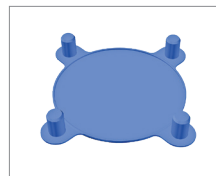
Caps & Plugs (CP)



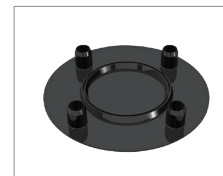
Hydraulic Fitting Plugs (HF)



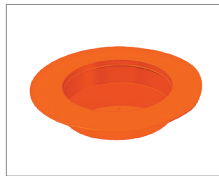
Bolted Flange Protector (BFP)



Stud-hole Flange Protector (FC)



Stud-hole Flange Protector (FC)



Valve-Flange Protector (FP)



Tool Joint Protector (TJP)



Sucker Rod Cap (SR) & Plugs (FPS)



EUE



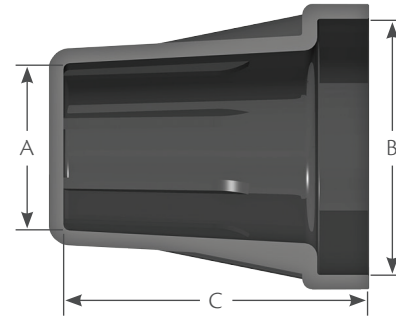
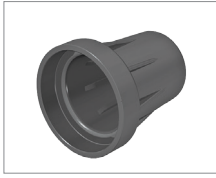
Sleeve Mesh (SM)

Product Description

Our protector products are excellent for preventing damage to equipment during storage or transport. Additional protector products are available upon request.

Protectors

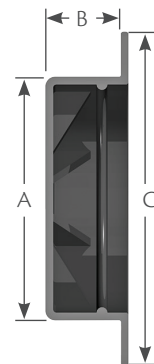
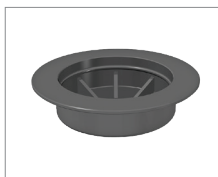
Sucker Rod Caps



Part Number	Shaft Size	Dimensions		
		A	B	C
SR 5	5/8	0.935	1.240	1.680
SR 6	3/4	1.062	1.500	1.940
SR 7	7/8	1.188	1.630	2.160
SR 8	1	1.375	2.000	2.470
SR 9	1 - 1/8	1.563	2.250	2.750

Sucker rod caps are also available in push style.

Sucker Rod Plugs



Part Number	Coupling Size	Dimensions		
		A	B	C
FPS 5	5/8	0.975	0.380	1.380
FPS 6	3/4	1.100	0.380	1.500
FPS 7	7/8	1.225	0.380	1.690
FPS 8	1	1.415	0.380	2.000