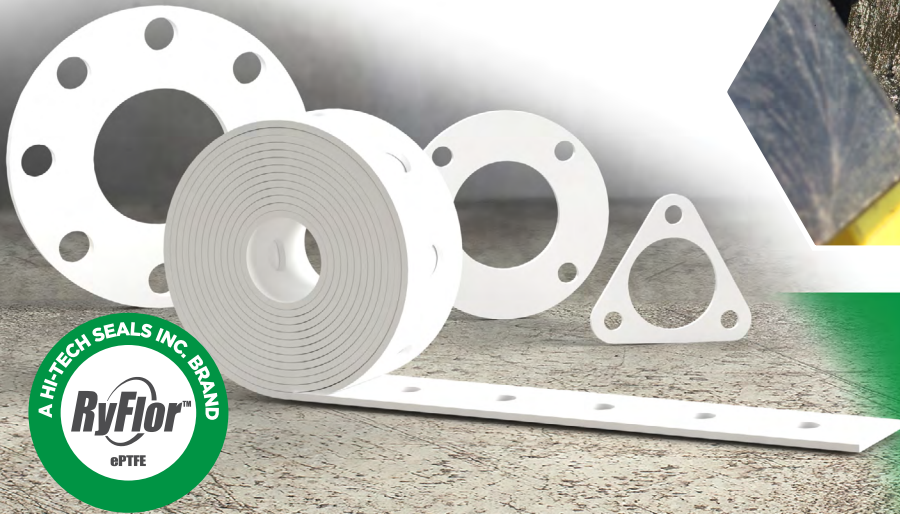




# Hi-Tech Seals Inc.

## RyFlor™ ePTFE

### Sealing the Unsealable!



Formulated to protect people, property and the environment against leaks, chemicals or gas exposure, and other dangerous outcomes.

RyFlor™ ePTFE is our critical service gasket material. It offers remarkable chemical compatibility, a wide temperature range, and withstands extreme and aggressive challenges in the field. Common sheet thicknesses include 1/4", 1/8", and 1/16". RyFlor™ solutions are available in standard and custom cut gaskets, material strips, and joint sealant.

RyFlor's isotropism provides a highly fibrillated microstructure with equal strength in every direction. It will not degrade or deteriorate, making it an excellent gasket solution for handling aggressive media environments in numerous industrial applications.

RyFlor™ ePTFE advantages:

- Ability to seal imperfect flange surfaces without experiencing deformation
- FDA and USDA compliant
- Substantially increase service life of gasket
- Resistant to UV and Ozone
- Withstands loads over 40,000 psi
- Excellent chemical resistance
- Low compressive creep under extreme conditions

02/2025

	ASTM	RF40*
Pressure Range, psi	-	Full Vacuum to 3,000
Chemical Compatibility Range, pH	-	1 to 14
Operating Temp., °C (°F)	-	-268 to +316 (-450 to +600)

Suitable for use in applications across industries, including:



Oil and Gas



Medical



Pulp & Paper



Pharmaceutical



Food and Beverage



Chemical Processing

*\*The above information is correct based on our knowledge at the date of its publication. The temperature range listed is a general guideline and final suitability will depend on various application conditions. To ensure this material meets customers' final requirements and safety demands, we recommend customers conduct their own testing.*

 [hitechseals.com](http://hitechseals.com)

 [info@hitechseals.com](mailto:info@hitechseals.com)

 [linkedin.com/company/hitechseals](https://www.linkedin.com/company/hitechseals)





Hi-Tech Seals Inc.

## Chemical Compatibility List

The following information is based on known chemical compatibility data for RyFlor™, and should only be considered as reference. Further laboratory tests may be required to verify the compatibility of a particular chemical with expanded RyFlor™ products.

### Chemicals Compatible with RyFlor™

Acetaldehyde	Barium Sulfide	Cetane (Hexadecane)
Acetamide	Beer	Chloric Acid
Acetic Acid	Benzaldehyde	Chlorinated Water
Acetic Anhydride	Benzene	Chlorine
Acetone	Benzoic Acid	Chlorine Dioxide
Acetophenone	Benzonitrile	Chloroacetic Acid
Acetylene	Benzyl Alcohol	Chlorobenzene
Acrylic Anhydride	Benzyl Chloride	Chloroethylene
Adipic Acid	Black Liquor (Sulfate Liquor)	Chloroform
Allyl Acetate	Borax	Chlorosulfonic Acid
Allyl Alcohol	Boric Acid	Chromic Acid
Allyl Chloride	Brine	Chromic Anhydride
Aluminum Chloride	Bromine	Citric Acid
Aluminum Flouride	Butadiene	Copper Acetate
Aluminum Hydroxide	Butane	Copper Chloride
Aluminum Nitrate	Butyl Acetate	Copper Fluoride
Aluminum Potassium Sulfate (Alum)	Butyl Alcohol (Butanol)	Copper Sulfate
Aluminum Sulfate	Butyl Amine	Cottonseed Oil
Ammonia	Butyl Chloride	Creosote
Ammonium Carbonate	Butyl Ether	Cresols (Cresylic Acid)
Ammonium Chloride	Butyl Phthalate	Crude Oil
Ammonium Fluoride	Butyl Methacrylate	Cyanic Acid
Ammonium Hydroxide	Butylene	Cyclohexane
Ammonium Nitrate	Butyric Acid	Cyclohexanol
Ammonium Phosphate	Calcium Bisulfite	Cyclohexanone
Ammonium Sulfate	Calcium Chloride	Dibutyl Phthalate
Amyl Acetate	Calcium Hydroxide	Dichlorobenzen
Amyl Alcohol	Calcium Hypochlorite	Dichloroethane
Amyl Chloride	Calcium Nitrate	Dichloroethylene
Aniline	Calcium Sulfate	Diesel Fuel
Aqua Regia	Carbolic Acid (Phenol)	Diethylene Glycol
Arsenic Acid	Carbon Dioxide	Diethyl Ether
Asphalt	Carbon Disulfide	Dimethyl Aniline
Barium Chloride	Carbon Monoxide	Dimethyl Ether
Barium Cyanide	Carbon Tetrachloride	Dimethyl Formamide
Barium Hydroxide	Carbonic Acid	Dipropylene Glycol
		Dioxane





Dow Therm  
Ethane  
Ethanolamine  
Ethers  
Ethyl Acetate (Acetic Ester)  
Ethyl Alcohol (Ethanol)  
Ethyl Benzene  
Ethyl Chloride  
Ethyl Ether  
Ethyl Hexoate  
Ethyl Sulfate  
Ethylene  
Ethylene Bromide  
Ethylene Chloride  
Ethylene Glycol (Dihydroxyethane)  
Ethylene Oxide  
Ferric Chloride  
Ferric Phosphate  
Ferrous Chloride  
Ferrous Sulfate  
Formaldehyde (Formalin)  
Formic Acid  
Freon  
Fuel Oil  
Furan  
Furfural (Furfuraldehyde)  
Glycerine (Glycerol)  
Glycol (Ethylene Glycol)  
Glycolic Acid  
Green Liquor (Sulfate Liquor)  
Heptane  
Hexachloroethane  
Hexane  
Hexamine  
Hydraulic Fluid  
Hydrazine  
Hydrobromic Acid  
Hydrochloric Acid  
Hydrocyanic Acid  
Hydrofluoric Acid  
Hydrofluorosilicic Acid  
Hydrofluosilicic Acid  
Hydrogen  
Hydrogen Chloride  
Hydrogen Fluoride  
Hydrogen Peroxide  
Hydrogen Sulfide  
Hypochlorous Acid  
Iodine  
Isobutane  
Isobutyl Alcohol  
Isopropyl Acetate  
Isopropyl Alcohol  
Isopropyl Ether  
Kerosene  
Lactic Acid  
Lead Acetate  
Lime (Calium Oxide)  
Linseed Oil  
Lubricating Oil  
Lye  
Magnesium Chloride  
Magnesium Hydroxide  
Magnesium Sulfate  
Mercury  
Methane  
Methyl Acetate  
Methyl Acetone  
Methyl Alcohol (Methanol)  
Methylacrylic Acid  
Methyl Amine  
Methyl Bromide  
Methyl Chloride  
Methyl Ethyl Ketone  
Methylene Chloride  
Mineral Oil  
Monochloroethane  
Naphtha  
Naphthalene  
Naphthols  
Natural Gas  
Nickel Chloride  
Nickel Nitrate  
Nickel Sulfate  
Nitric Acid  
Nitrobenzene  
Nitrocalcite (Calcium Nitrate)  
Nitrogen  
Nitrogen Tetroxide  
Nitromethane  
Nitrous Acid  
Nitrous Oxide  
Octane  
Oleic Acid  
Oxalic Acid  
Oxygen  
Ozone  
Palmitic Acid  
Pentane  
Perchloric Acid  
Perchloroethylene  
Perfluoroxylyene  
Petroleum Oil  
Petroleum Benzene  
Petroleum Ether  
Phenol  
Phosphoric Acid  
Phosphorus Pentachloride  
Phosphorus Trichloride  
Phthalic Acid  
Picric Acid  
Pinene  
Piperidine  
Potash (Potassium Carbonate)  
Potassium Acetate  
Potassium Bichromate  
Potassium Bromide  
Potassium Chlorate  
Potassium Chloride  
Potassium Chromate  
Potassium Cyanide  
Potassium Dichromate  
Potassium Hydrate  
Potassium Hydroxide (Caustic Potash)  
Potassium Hypochlorite  
Potassium Iodide  
Potassium Nitrate  
Potassium Permanganate  
Potassium Sulfate





Producer Gas  
Propane  
Propyl Acetate  
Propyl Alcohol (Propanol)  
Propylene  
Propylene Glycol  
Propyl Nitrate  
Pydraul  
Pyridine  
Salicylic Acid  
Sea Water  
Silicone Oil  
Silver Bromide  
Silver Chloride  
Silver Nitrate  
Soap  
Soda Ash (Sodium Carbonate)  
Sodium Acetate  
Sodium Acid Sulfate  
Sodium Aluminate  
Sodium Aluminum Sulfate  
Sodium Bicarbonate  
(Baking Soda)  
Sodium Bisulfate  
Sodium Bromide  
Sodium Chloride  
Sodium Chromate  
Sodium Cyanide  
Sodium Dioxide

Sodium Fluoride  
Sodium Hydroxide (Caustic Soda)  
Sodium Hypochlorite  
Sodium Metaphosphate  
Sodium Metasilicate  
Sodium Nitrate  
Sodium Perborate  
Sodium Peroxide  
Sodium Phosphate  
Sodium Silicate (Water Glass)  
Sodium Sulfate  
Sodium Sulfide  
Sodium Thiosulfate  
Stannous Chloride  
Starch  
Steam  
Stearic Acid  
Styrene  
Sulfate Liquor, Black  
Sulfate Liquor, Green  
Sulfur Chloride  
Sulfur Dioxide  
Sulfur Trioxide  
Sulfuric Acid  
Sulfurous Acid  
Tannic Acid  
Tartaric Acid  
Tetrabromoethane  
Tetrachloroethane

Tetrachloroethylene  
Toluene (Toluol)  
Tributyl Phosphate  
Trichloroacetic Acid  
Trichloroethane  
Trichloroethylene  
Trichloromonofluoroethane  
Trichloropropane  
Tricresyl Phosphate  
Triethanolamine  
Triethylamine  
Turpentine  
Urea  
Varnish  
Vinegar  
Vinyl Acetate  
Vinyl Chloride  
Water, Acid Mine  
Water, Boiler Feed  
Whiskey  
White Liquor, Pulp Mill  
White Spirit  
Wine  
Xylenes (Xylol Xylole)  
Zinc Chloride  
Zinc Nitrate  
Zinc Sulfate

## Chemicals Not Compatible with RyFlor™

Bromine Trifluoride  
Chlorine Trifluoride  
Oxygen Difluoride  
Fluorine  
Molten Alkali Metals

