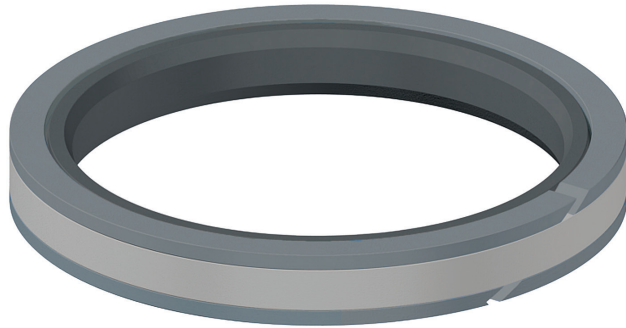


# Capped T-Seals

IMPERIAL SEALS



Capped T-Seals

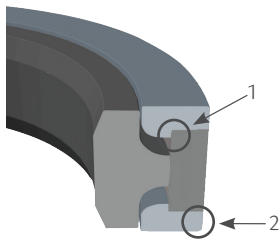
Seal (Cap) Materials	Temp. Range		
15% Glass, 5% Moly PTFE	-268°C	to	288°C
40% Bronze filled PTFE	-268°C	to	288°C
Energizer Materials			
Nitrile	-40°C	to	120°C
Low Temp. Nitrile	-54°C	to	116°C
Viton™/Fluorocarbon	-26°C	to	204°C
Ethylene Propylene	-54°C	to	150°C
Back-up Ring Material:			
Nylon	-54°C	to	121°C

Other popular Back-up materials that are available include PEEK and various PTFE compounds.

## Product Description

Capped T-seals are double-acting, high pressure, high performance piston seals. They are designed to accommodate large extrusion gaps. The major benefits of this design are its excellent extrusion resistance, low friction, and low wear, which are all presented in a compact and stable design. Standard capped T-seals consist of four pieces; a nitrile energizer, a 15% glass, 5% moly PTFE cap, and two nylon anti-extrusion rings. Suitable for pressures up to 10000 PSI.

## Improve Ease of Installation



1. With the inter-locking design, customers benefit from:
  - A reduced chance of installing the back-up rings incorrectly.
  - The back-up rings locking behind T-seal when assembled in the application.
2. Chamfered back-up ring reduces the possibility that the back-up ring can be sheared off in a port or retaining ring groove during assembly.

Contact us if you have any issue installing a capped T-Seal.

## Part Numbers:

CTS - \_\_\_\_\_  
                     |  
                     Nominal O.D.

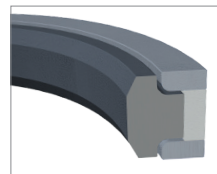
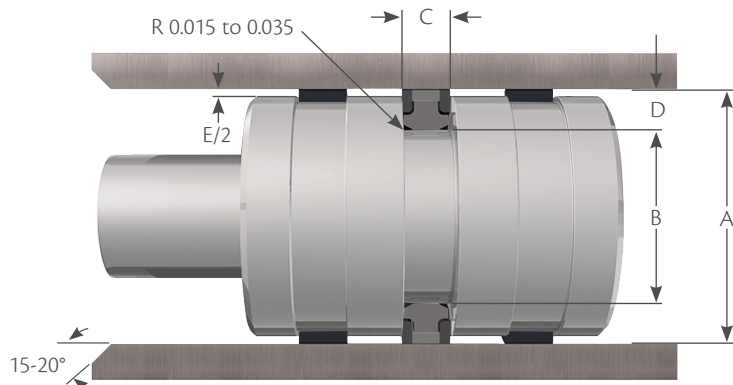
                    |  
                     Material - if other than standard

CAT\* - \_\_\_\_\_ 4  
                     |  
                     O.D.

**Example:** CTS 2500 - Capped T-seal, Nitrile Energizer, Glass/Moly PTFE Cap, Two Nylon Anti-Extrusion Rings, 2 - 1/2" Nominal ID

\* Caterpillar equivalent style

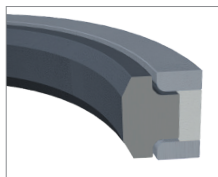
# Capped T-Seals



Capped T-Seals

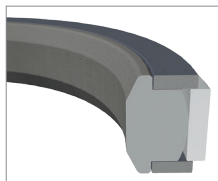
Part Number	A		B		C	D	Nominal E*	
	Bore Diameter	Tolerance	Groove Diameter	Tolerance	Groove Width +0.010 -0.000	Groove Depth	Capped T-Seal C/S	Diametrical Clearance
CTS 1500	1.500	+0.002 / - 0.000	1.126	+0.000 / - 0.002	0.424	0.187	3/16	0.025
CTS 1750	1.750	+0.002 / - 0.000	1.376	+0.000 / - 0.002	0.424	0.187	3/16	0.025
CTS 2000	2.000	+0.002 / - 0.000	1.626	+0.000 / - 0.002	0.424	0.187	3/16	0.025
CTS 2250	2.250	+0.002 / - 0.000	1.876	+0.000 / - 0.002	0.424	0.187	3/16	0.025
CTS 2500	2.500	+0.002 / - 0.000	2.126	+0.000 / - 0.002	0.424	0.187	3/16	0.025
CTS 2750	2.750	+0.002 / - 0.000	2.376	+0.000 / - 0.002	0.424	0.187	3/16	0.025
CTS 3000	3.000	+0.003 / - 0.000	2.520	+0.000 / - 0.003	0.579	0.240	1/4	0.030
CTS 3250	3.250	+0.003 / - 0.000	2.770	+0.000 / - 0.003	0.579	0.240	1/4	0.030
CTS 3500	3.500	+0.003 / - 0.000	3.020	+0.000 / - 0.003	0.579	0.240	1/4	0.030
CTS 3750	3.750	+0.003 / - 0.000	3.270	+0.000 / - 0.003	0.579	0.240	1/4	0.030
CTS 4000	4.000	+0.003 / - 0.000	3.520	+0.000 / - 0.003	0.579	0.240	1/4	0.030
CTS 4250	4.250	+0.003 / - 0.000	3.770	+0.000 / - 0.003	0.579	0.240	1/4	0.030
CTS 4500	4.500	+0.003 / - 0.000	4.020	+0.000 / - 0.003	0.579	0.240	1/4	0.030
CTS 4750	4.750	+0.003 / - 0.000	4.270	+0.000 / - 0.003	0.579	0.240	1/4	0.030
CTS 4780	4.780	+0.003 / - 0.000	4.300	+0.000 / - 0.003	0.579	0.240	1/4	0.030
CTS 5000	5.000	+0.004 / - 0.000	4.270	+0.000 / - 0.004	0.750	0.365	3/8	0.035
CTS 5250	5.250	+0.004 / - 0.000	4.520	+0.000 / - 0.004	0.750	0.365	3/8	0.035
CTS 5500	5.500	+0.004 / - 0.000	4.770	+0.000 / - 0.004	0.750	0.365	3/8	0.035
CTS 5750	5.750	+0.004 / - 0.000	5.020	+0.000 / - 0.004	0.750	0.365	3/8	0.035
CTS 6000	6.000	+0.004 / - 0.000	5.270	+0.000 / - 0.004	0.750	0.365	3/8	0.035
CTS 6250	6.250	+0.004 / - 0.000	5.520	+0.000 / - 0.004	0.750	0.365	3/8	0.035
CTS 6290	6.290	+0.004 / - 0.000	5.560	+0.000 / - 0.004	0.750	0.365	3/8	0.035
CTS 6500	6.500	+0.004 / - 0.000	5.770	+0.000 / - 0.004	0.750	0.365	3/8	0.035
CTS 6750	6.750	+0.004 / - 0.000	6.020	+0.000 / - 0.004	0.750	0.365	3/8	0.035
CTS 7000	7.000	+0.004 / - 0.000	6.270	+0.000 / - 0.004	0.750	0.365	3/8	0.035
CTS 7040	7.040	+0.004 / - 0.000	6.310	+0.000 / - 0.004	0.750	0.365	3/8	0.035
CTS 7250	7.250	+0.004 / - 0.000	6.520	+0.000 / - 0.004	0.750	0.365	3/8	0.035
CTS 7500	7.500	+0.004 / - 0.000	6.770	+0.000 / - 0.004	0.750	0.365	3/8	0.035
CTS 7540	7.540	+0.004 / - 0.000	6.810	+0.000 / - 0.004	0.750	0.365	3/8	0.035

# Capped T-Seals



Part Number	A		B		C	D	Nominal E*	
	Bore Diameter	Tolerance	Groove Diameter	Tolerance	Groove Width +0.010 -0.000	Groove Depth	Capped T-Seal C/S	Diametrical Clearance
CTS 7750	7.750	+0.004 / - 0.000	7.020	+0.000 / - 0.004	0.750	0.365	3/8	0.035
CTS 7800	7.800	+0.004 / - 0.000	7.070	+0.000 / - 0.004	0.750	0.365	3/8	0.035
CTS 8000	8.000	+0.004 / - 0.000	7.270	+0.000 / - 0.004	0.750	0.365	3/8	0.035
CTS 8250	8.250	+0.004 / - 0.000	7.520	+0.000 / - 0.004	0.750	0.365	3/8	0.035
CTS 8300	8.300	+0.004 / - 0.000	7.570	+0.000 / - 0.004	0.750	0.365	3/8	0.035
CTS 8500	8.500	+0.004 / - 0.000	7.770	+0.000 / - 0.004	0.750	0.365	3/8	0.035
CTS 8750	8.750	+0.004 / - 0.000	8.020	+0.000 / - 0.004	0.750	0.365	3/8	0.035
CTS 9000	9.000	+0.004 / - 0.000	8.270	+0.000 / - 0.004	0.750	0.365	3/8	0.035
CTS 9040	9.040	+0.004 / - 0.000	8.310	+0.000 / - 0.004	0.750	0.365	3/8	0.035
CTS 9500	9.500	+0.004 / - 0.000	8.770	+0.000 / - 0.004	0.750	0.365	3/8	0.035
CTS 10000	10.000	+0.004 / - 0.000	9.270	+0.000 / - 0.004	0.750	0.365	3/8	0.035
CTS 10500	10.500	+0.004 / - 0.000	9.770	+0.000 / - 0.004	0.750	0.365	3/8	0.035
CTS 11000	11.000	+0.004 / - 0.000	10.270	+0.000 / - 0.004	0.750	0.365	3/8	0.035
CTS 12000	12.000	+0.004 / - 0.000	11.270	+0.000 / - 0.004	0.750	0.365	3/8	0.035
CTS 12500	12.500	+0.004 / - 0.000	11.770	+0.000 / - 0.004	0.750	0.365	3/8	0.035
CTS 13000	13.000	+0.004 / - 0.000	12.270	+0.000 / - 0.004	0.750	0.365	3/8	0.035
CTS 13500	13.500	+0.004 / - 0.000	12.770	+0.000 / - 0.004	0.750	0.365	3/8	0.035
CTS 14000	14.000	+0.004 / - 0.000	13.270	+0.000 / - 0.004	0.750	0.365	3/8	0.035

## \* Caterpillar Four Piece



Part Number	CAT Number	O.D.	Height	Length
CAT 55004	8J8767	5.500	0.412 - 0.416	0.628 - 0.632
CAT 65004	8J8703	6.500	0.480 - 0.484	0.628 - 0.632
CAT 70004	8J3749	7.000	0.480 - 0.484	0.628 - 0.632
CAT 85004	3G4762	8.500	0.543 - 0.547	0.628 - 0.632
CAT 105004	3G4765	10.500	0.591 - 0.595	0.688 - 0.692

Our Caterpillar parts are not original equipment parts. Caterpillar part numbers are only provided as a reference.