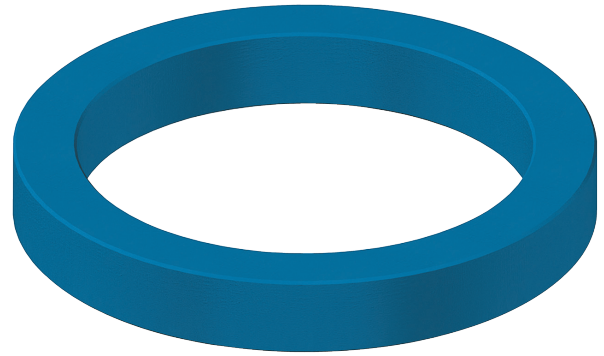


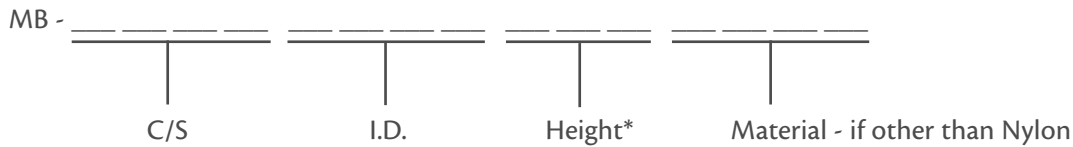
Materials	Temp. Range
Nylon	-30°C to 93°C
Hytrel®	-54°C to 149°C
PTFE	-268°C to 232°C
Urethane	-54°C to 105°C



Product Description

Modular bearings are used in both rod and piston applications. They act as a wear and load bearing surface to help extend the life of a loaded or unloaded U-cup. The standard material of modular bearings is nylon.

Part Numbers:

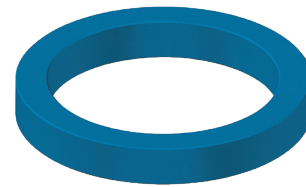
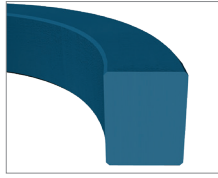


** Height is only listed if the axial height is greater than the cross-section.*

Example: MB - 25001750 H - Modular Bearing, Hytrel®, 1 - 3/4” Nom. I.D., 2 - 1/4” Nom. O.D., 1/4” Nom. C/S, 1/4” Nom. Height

Modular Bearings

IMPERIAL SEALS



Part Number	I.D.	O.D.	Height
MB 12500125	1/8	3/8	1/8
MB 12500250	1/4	1/2	1/8
MB 12500312	5/16	9/16	1/8
MB 12500375	3/8	5/8	1/8
MB 12500500	1/2	3/4	1/8
MB 12500625	5/8	7/8	1/8
MB 12500687	11/16	15/16	1/8
MB 12500812	13/16	1 - 1/16	1/8
MB 12500937	15/16	1 - 3/16	1/8
MB 12501000	1	1 - 1/4	1/8
MB 12501062	1 - 1/16	1 - 5/16	1/8
MB 12501250	1 - 1/4	1 - 1/2	1/8
MB 12501375	1 - 3/8	1 - 5/8	1/8
MB 12501500	1 - 1/2	1 - 3/4	1/8
MB 18700500	1/2	7/8	3/16
MB 18700625	5/8	1	3/16
MB 18701000	1	1 - 3/8	3/16
MB 18701250	1 - 1/4	1 - 5/8	3/16
MB 18701312	1 - 5/16	1 - 11/16	3/16
MB 18701500	1 - 1/2	1 - 7/8	3/16
MB 18701625	1 - 5/8	2	3/16
MB 18701875	1 - 7/8	2 - 1/4	3/16
MB 18701937	1 - 15/16	2 - 5/16	3/16
MB 18702000	2	2 - 3/8	3/16
MB 18702125	2 - 1/8	2 - 1/2	3/16
MB 18702500	2 - 1/2	2 - 7/8	3/16
MB 18702625	2 - 5/8	3	3/16
MB 18702750	2 - 3/4	3 - 1/8	3/16
MB 18703000	3	3 - 3/8	3/16
MB 18703125	3 - 1/8	3 - 1/2	3/16
MB 18703250	3 - 1/4	3 - 5/8	3/16
MB 18703500	3 - 1/2	3 - 7/8	3/16
MB 18703625	3 - 5/8	4	3/16
MB 18703875	3 - 7/8	4 - 1/4	3/16
MB 25000500	1/2	1	1/4
MB 25000750	3/4	1 - 1/4	1/4
MB 25000875	7/8	1 - 3/8	1/4
MB 25001000	1	1 - 1/2	1/4
MB 25001062	1 - 1/16	1 - 9/16	1/4
MB 25001250	1 - 1/4	1 - 3/4	1/4
MB 25001312	1 - 5/16	1 - 13/16	1/4
MB 25001375	1 - 3/8	1 - 7/8	1/4
MB 25001500	1 - 1/2	2	1/4

Part Number	I.D.	O.D.	Height
MB 25001750	1 - 3/4	2 - 1/4	1/4
MB 25001875	1 - 7/8	2 - 3/8	1/4
MB 25002000	2	2 - 1/2	1/4
MB 25002250	2 - 1/4	2 - 3/4	1/4
MB 25002500	2 - 1/2	3	1/4
MB 25002625	2 - 5/8	3 - 1/8	1/4
MB 25002750	2 - 3/4	3 - 1/4	1/4
MB 25002875	2 - 7/8	3 - 3/8	1/4
MB 25003000	3	3 - 1/2	1/4
MB 25003250	3 - 1/4	3 - 3/4	1/4
MB 25003375	3 - 3/8	3 - 7/8	1/4
MB 25003500	3 - 1/2	4	1/4
MB 25003750	3 - 3/4	4 - 1/4	1/4
MB 25004000	4	4 - 1/2	1/4
MB 25004125	4 - 1/8	4 - 5/8	1/4
MB 25004250	4 - 1/4	4 - 3/4	1/4
MB 25004500	4 - 1/2	5	1/4
MB 25005000	5	5 - 1/2	1/4
MB 25005250	5 - 1/4	5 - 3/4	1/4
MB 25005500	5 - 1/2	6	1/4
MB 25006000	6	6 - 1/2	1/4
MB 25006250	6 - 1/4	6 - 3/4	1/4
MB 25007250	7 - 1/4	7 - 3/4	1/4
MB 25007500	7 - 1/2	8	1/4
MB 25007750	7 - 3/4	8 - 1/4	1/4
MB 250010000	10	10 - 1/2	1/4
MB 250010750	10 - 3/4	11 - 1/4	1/4
MB 250013000	13	13 - 1/2	1/4
MB 28102250	2 - 1/4	2 - 13/16	9/32
MB 28108000	8	8 - 9/16	9/32
MB 31201250	1 - 1/4	1 - 7/8	5/16
MB 31201375	1 - 3/8	2	5/16
MB 31201500	1 - 1/2	2 - 1/8	5/16
MB 31201625	1 - 5/8	2 - 1/4	5/16
MB 31201750	1 - 3/4	2 - 3/8	5/16
MB 31201875	1 - 7/8	2 - 1/2	5/16
MB 31202000	2	2 - 5/8	5/16
MB 31202250	2 - 1/4	2 - 7/8	5/16
MB 31202375	2 - 3/8	3	5/16
MB 31202500	2 - 1/2	3 - 1/8	5/16
MB 31203000	3	3 - 5/8	5/16
MB 31203125	3 - 1/8	3 - 3/4	5/16
MB 31203500	3 - 1/2	4 - 1/8	5/16

Modular Bearings

Part Number	I.D.	O.D.	Height
MB 31203750	3 - 3/4	4 - 3/8	5/16
MB 31204125	4 - 1/8	4 - 3/4	5/16
MB 31204250	4 - 1/4	4 - 7/8	5/16
MB 31204375	4 - 3/8	5	5/16
MB 31204500	4 - 1/2	5 - 1/8	5/16
MB 31205375	5 - 3/8	6	5/16
MB 31208000	8	8 - 5/8	5/16
MB 37500875	7/8	1 - 5/8	3/8
MB 37501000	1	1 - 3/4	3/8
MB 37501250	1 - 1/4	2	3/8
MB 37501375	1 - 3/8	2 - 1/8	3/8
MB 37501500	1 - 1/2	2 - 1/4	3/8
MB 37501625	1 - 5/8	2 - 3/8	3/8
MB 37501750	1 - 3/4	2 - 1/2	3/8
MB 37501875	1 - 7/8	2 - 5/8	3/8
MB 37502000	2	2 - 3/4	3/8
MB 37502250	2 - 1/4	3	3/8
MB 37502375	2 - 3/8	3 - 1/8	3/8
MB 37502500	2 - 1/2	3 - 1/4	3/8
MB 37502625	2 - 5/8	3 - 3/8	3/8
MB 37502750	2 - 3/4	3 - 1/2	3/8
MB 37503000	3	3 - 3/4	3/8
MB 37503125	3 - 1/8	3 - 7/8	3/8
MB 37503250	3 - 1/4	4	3/8
MB 37503375	3 - 3/8	4 - 1/8	3/8
MB 37503500	3 - 1/2	4 - 1/4	3/8
MB 37503750	3 - 3/4	4 - 1/2	3/8
MB 37503875	3 - 7/8	4 - 5/8	3/8
MB 37504000	4	4 - 3/4	3/8
MB 37504125	4 - 1/8	4 - 7/8	3/8
MB 37504250	4 - 1/4	5	3/8
MB 37504375	4 - 3/8	5 - 1/8	3/8
MB 37504500	4 - 1/2	5 - 1/4	3/8
MB 37504750	4 - 3/4	5 - 1/2	3/8
MB 37504875	4 - 7/8	5 - 5/8	3/8
MB 37505000	5	5 - 3/4	3/8
MB 37505250	5 - 1/4	6	3/8
MB 37505375	5 - 3/8	6 - 1/8	3/8
MB 37505875	5 - 7/8	6 - 5/8	3/8
MB 37506000	6	6 - 3/4	3/8
MB 37506250	6 - 1/4	7	3/8
MB 37506500	6 - 1/2	7 - 1/4	3/8
MB 37507000	7	7 - 3/4	3/8
MB 37507250	7 - 1/4	8	3/8
MB 37507500	7 - 1/2	8 - 1/4	3/8
MB 37507750	7 - 3/4	8 - 1/2	3/8
MB 37509000	9	9 - 3/4	3/8
MB 37509250	9 - 1/4	10	3/8
MB 37509750	9 - 3/4	10 - 1/2	3/8
MB 375010000	10	10 - 3/4	3/8
MB 375010500	10 - 1/2	11 - 1/4	3/8

Part Number	I.D.	O.D.	Height
MB 375011000	11	11 - 3/4	3/8
MB 375011250	11 - 1/4	12	3/8
MB 43701000	1	1 - 7/8	7/16
MB 43702125	2 - 1/8	3	7/16
MB 43705000	5	5 - 7/8	7/16
MB 50002000	2	3	1/2
MB 50002250	2 - 1/4	3 - 1/4	1/2
MB 50002375	2 - 3/8	3 - 3/8	1/2
MB 50002500	2 - 1/2	3 - 1/2	1/2
MB 50002750	2 - 3/4	3 - 3/4	1/2
MB 50003000	3	4	1/2
MB 50003500	3 - 1/2	4 - 1/2	1/2
MB 50003750	3 - 3/4	4 - 3/4	1/2
MB 50004000	4	5	1/2
MB 50004250	4 - 1/4	5 - 1/4	1/2
MB 50004500	4 - 1/2	5 - 1/2	1/2
MB 50005000	5	6	1/2
MB 50005250	5 - 1/4	6 - 1/4	1/2
MB 50005500	5 - 1/2	6 - 1/2	1/2
MB 50006000	6	7	1/2
MB 50006500	6 - 1/2	7 - 1/2	1/2
MB 50006750	6 - 3/4	7 - 3/4	1/2
MB 50007000	7	8	1/2
MB 50008000	8	9	1/2
MB 50008500	8 - 1/2	9 - 1/2	1/2
MB 50009000	9	10	1/2
MB 50009500	9 - 1/2	10 - 1/2	1/2
MB 500010000	10	11	1/2
MB 500010500	10 - 1/2	11 - 1/2	1/2
MB 500011500	11 - 1/2	12 - 1/2	1/2
MB 500012000	12	13	1/2
MB 500013500	13 - 1/2	14 - 1/2	1/2
MB 500015000	15	16	1/2
MB 500017000	17	18	1/2
MB 500019000	19	20	1/2
MB 500021000	21	22	1/2
MB 500029000	29	30	1/2
MB 62502000	2	3 - 1/4	5/8
MB 62502500	2 - 1/2	3 - 3/4	5/8
MB 62502750	2 - 3/4	4	5/8
MB 62503000	3	4 - 1/4	5/8
MB 62503250	3 - 1/4	4 - 1/2	5/8
MB 62504625	4 - 5/8	5 - 7/8	5/8
MB 62504750	4 - 3/4	6	5/8
MB 62506750	6 - 3/4	8	5/8
MB 62507000	7	8 - 1/4	5/8
MB 625012750	12 - 3/4	14	5/8
MB 625030000	30	31 - 1/4	5/8
MB 75006500	6 - 1/2	8	3/4
MB 75007500	7 - 1/2	9	3/4
MB 75008000	8	9 - 1/2	3/4