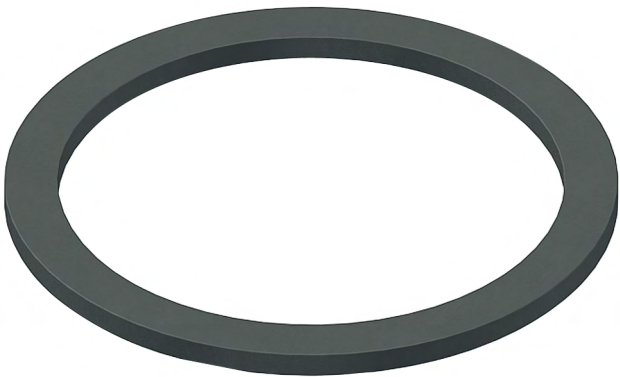
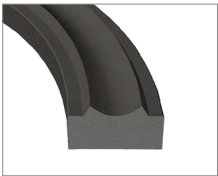


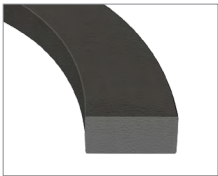
Materials	Temp. Range		
Urethane (PU)	-54°C	to	105°C
Hytrel®/Fluorotrel™ (TPC-ET)	-54°C	to	149°C
Nylon/Polyamide (PA)	-30°C	to	93°C
Hydrogenated Nitrile (HNBR)	-40°C	to	160°C
Nitrile (NBR)	-40°C	to	120°C
Viton™/Fluorocarbon (FKM)	-26°C	to	204°C
Polytetrafluoroethylene (PTFE)	-260 °C	to	260°C



PIP Rings



Standard PIP  
(for use with O-ring loaded U-cups)

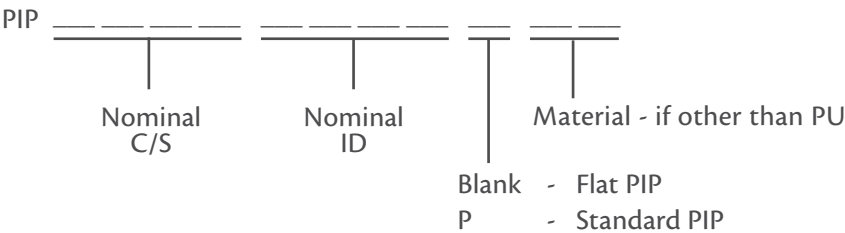


Flat PIP  
(for use with quad ring loaded U-cups)

## Product Description

Pressure inverting pedestal (PIP) rings are designed to convert a loaded U-cup into a bi-directional seal for high-pressure applications. The standard PIP ring design is only functional in conjunction with an O-ring loaded U-cup. The flat PIP ring is rectangular in shape which makes it compatible with both quad loaded and O-ring loaded U-cups. For gland dimension and design information, contact a Hi-Tech Seals representative.

## Part Numbers:



**Example:** PIP 2500 3000P - PU PIP Ring, 1/4" C/S, 3" ID, 3 - 1/2" OD