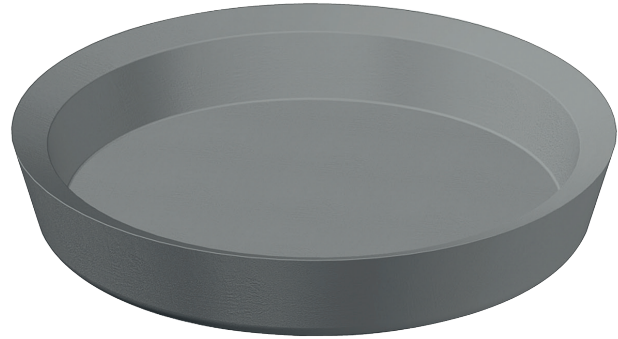


Materials	Temp. Range
Nitrile	-40°C to 120°C
Viton™/Fluorocarbon	-26°C to 204°C
Hydrogenated Nitrile	-40°C to 160°C
Urethane	-54°C to 105°C
PTFE	-268°C to 232°C

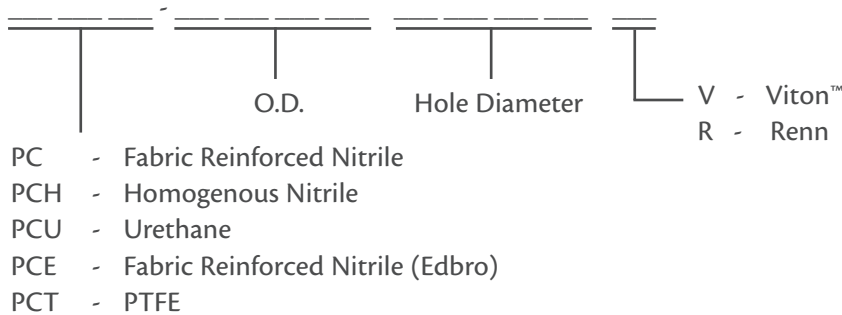


## Product Description

Piston cups seal on their outer lip and are held in place by a follower plate. To maximize product availability, our piston cups do not come with a pre-cut bolt hole. Our machining department can quickly cut the appropriate hole size for an application.

We also stock Edbro and Renn piston cups in unique sizes. Contact us for more information.

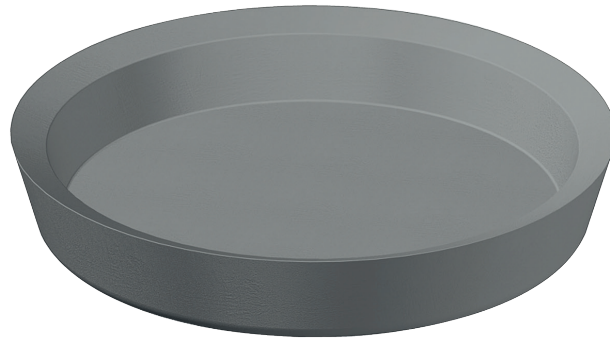
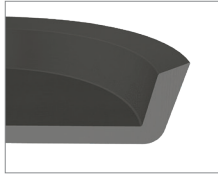
## Part Numbers:



**Example:** PCH 2500 - Homogenous Piston Cup, Nitrile, 2 - 1/2" Nom. O.D.

# Piston Cups

IMPERIAL SEALS



Part Number	Nominal Seal Dimensions		
	O.D.	Height	C/S
PC 0375	3/8	1/4	3/32
PC 0500	1/2	7/16	3/32
PC 0562	9/16	5/16	3/32
PC 0625	5/8	9/32	3/32
PC 0687	11/16	5/16	3/32
PC 0750	3/4	7/16	3/32
PC 0812	13/16	5/16	3/32
PC 0875	7/8	3/8	3/32
PC 0937	15/16	5/16	3/32
PC 1000	1	7/16	3/32
PC 1125	1 - 1/8	7/16	3/32
PC 1250	1 - 1/4	7/16	3/32
PC 1375	1 - 3/8	7/16	3/32
PC 1437	1 - 7/16	1/2	1/8
PC 1500	1 - 1/2	1/2	1/8
PC 1562	1 - 9/16	1/2	1/8
PC 1625	1 - 5/8	1/2	1/8
PC 1750	1 - 3/4	1/2	1/8
PC 1812	1 - 13/16	1/2	1/8
PC 1875	1 - 7/8	1/2	1/8
PC 2000	2	1/2	1/8
PC 2125	2 - 1/8	1/2	1/8
PC 2250	2 - 1/4	1/2	1/8
PC 2375	2 - 3/8	1/2	1/8
PC 2500	2 - 1/2	1/2	1/8
PC 2625	2 - 5/8	1/2	1/8
PC 2750	2 - 3/4	1/2	1/8
PC 2875	2 - 7/8	1/2	1/8
PC 3000	3	5/8	5/32
PC 3125	3 - 1/8	5/8	5/32
PC 3250	3 - 1/4	5/8	5/32
PC 3375	3 - 3/8	5/8	5/32
PC 3500	3 - 1/2	5/8	5/32
PC 3625	3 - 5/8	5/8	5/32

Part Number	Nominal Seal Dimensions		
	O.D.	Height	C/S
PC 3750	3 - 3/4	5/8	5/32
PC 3875	3 - 7/8	5/8	5/32
PC 4000	4	5/8	5/32
PC 4250	4 - 1/4	5/8	5/32
PC 4500	4 - 1/2	5/8	5/32
PC 4750	4 - 3/4	5/8	5/32
PC 5000	5	3/4	3/16
PC 5250	5 - 1/4	3/4	3/16
PC 5500	5 - 1/2	3/4	3/16
PC 5750	5 - 3/4	3/4	3/16
PC 6000	6	3/4	3/16
PC 6125	6 - 1/8	3/4	3/16
PC 6250	6 - 1/4	3/4	3/16
PC 6500	6 - 1/2	3/4	3/16
PC 6750	6 - 3/4	3/4	3/16
PC 7000	7	3/4	3/16
PC 7250	7 - 1/4	3/4	3/16
PC 7500	7 - 1/2	3/4	3/16
PC 7750	7 - 3/4	3/4	3/16
PC 8000	8	1	3/16
PC 8500	8 - 1/2	1	3/16
PC 9000	9	1	3/16
PC 9500	9 - 1/2	1	3/16
PC 9750	9 - 3/4	1	3/16
PC 10000	10	1	3/16
PC 10500	10 - 1/2	1	3/16
PC 11000	11	1	3/16
PC 11500	11 - 1/2	1	3/16
PC 11562	11 - 9/16	1	3/16
PC 12000	12	1	3/16
PC 12500	12 - 1/2	1	3/16
PC 14000	14	1	3/16
PC 14250	14 - 1/4	1	3/16
PC 16750	16 - 3/4	1	1/4