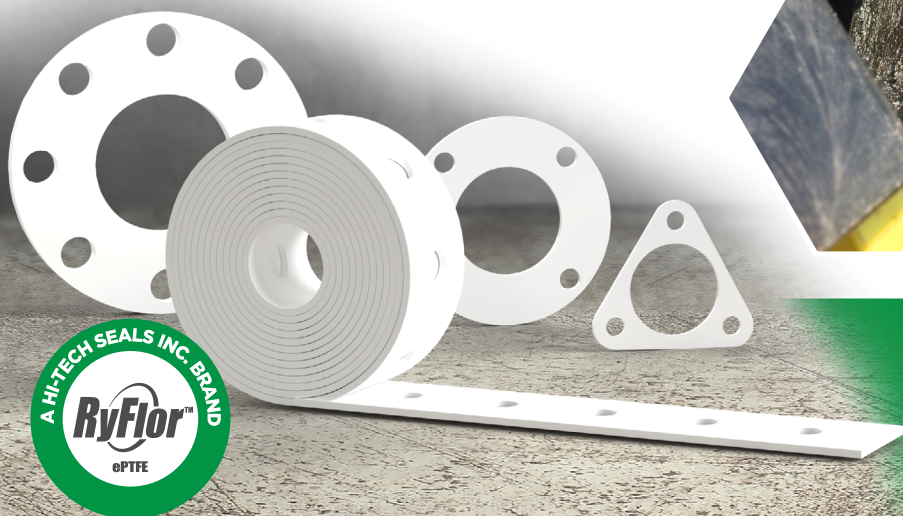




Hi-Tech Seals

RyFlor™ ePTFE

Sealing the Unsealable!



Formulated to protect people, property and the environment against leaks, chemicals or gas exposure, and other dangerous outcomes.

RyFlor™ ePTFE is our critical service gasket material. It offers remarkable chemical compatibility, a wide temperature range, and withstands extreme and aggressive challenges in the field. Common sheet thicknesses include 1/4", 1/8", and 1/16". RyFlor™ solutions are available in standard and custom cut gaskets, material strips, and joint sealant.

RyFlor's isotropism provides a highly fibrillated microstructure with equal strength in every direction. It will not degrade or deteriorate, making it an excellent gasket solution for handling aggressive media environments in numerous industrial applications.

RyFlor™ ePTFE advantages:

- Ability to seal imperfect flange surfaces without experiencing deformation
- FDA compliant
- Substantially increase service life of gasket
- Resistant to UV and Ozone
- Withstands loads over 40,000 psi
- Excellent chemical resistance
- Low compressive creep under extreme conditions

	ASTM	RF40*
Pressure Range, psi	-	Full Vacuum to 3,000
Chemical Compatibility Range, pH	-	1 to 14
Operating Temp., °C (°F)	-	-268 to +316 (-450 to +600)

Suitable for use in applications across industries, including:



Oil and Gas



Medical



Pulp & Paper



Pharmaceutical



Food and Beverage



Chemical Processing

**The above information is correct based on our knowledge at the date of its publication. The temperature range listed is a general guideline and final suitability will depend on various application conditions. To ensure this material meets customers' final requirements and safety demands, we recommend customers conduct their own testing.*



hitechseals.com



info@hitechseals.com



[linkedin.com/company/hitechseals](https://www.linkedin.com/company/hitechseals)





Hi-Tech Seals

Chemical Compatibility List

The following information is based on known chemical compatibility data for RyFlor™, and should only be considered as reference. Further laboratory tests may be required to verify the compatibility of a particular chemical with expanded RyFlor™ products.

Chemicals Compatible with RyFlor™

Acetaldehyde	Barium Sulfide	Cetane (Hexadecane)
Acetamide	Beer	Chloric Acid
Acetic Acid	Benzaldehyde	Chlorinated Water
Acetic Anhydride	Benzene	Chlorine
Acetone	Benzoic Acid	Chlorine Dioxide
Acetophenone	Benzonitrile	Chloroacetic Acid
Acetylene	Benzyl Alcohol	Chlorobenzene
Acrylic Anhydride	Benzyl Chloride	Chloroethylene
Adipic Acid	Black Liquor (Sulfate Liquor)	Chloroform
Allyl Acetate	Borax	Chlorosulfonic Acid
Allyl Alcohol	Boric Acid	Chromic Acid
Allyl Chloride	Brine	Chromic Anhydride
Aluminum Chloride	Bromine	Citric Acid
Aluminum Flouride	Butadiene	Copper Acetate
Aluminum Hydroxide	Butane	Copper Chloride
Aluminum Nitrate	Butyl Acetate	Copper Fluoride
Aluminum Potassium Sulfate (Alum)	Butyl Alcohol (Butanol)	Copper Sulfate
Aluminum Sulfate	Butyl Amine	Cottonseed Oil
Ammonia	Butyl Chloride	Creosote
Ammonium Carbonate	Butyl Ether	Cresols (Cresylic Acid)
Ammonium Chloride	Butyl Phthalate	Crude Oil
Ammonium Fluoride	Butyl Methacrylate	Cyanic Acid
Ammonium Hydroxide	Butylene	Cyclohexane
Ammonium Nitrate	Butyric Acid	Cyclohexanol
Ammonium Phosphate	Calcium Bisulfite	Cyclohexanone
Ammonium Sulfate	Calcium Chloride	Dibutyl Phthalate
Amyl Acetate	Calcium Hydroxide	Dichlorobenzen
Amyl Alcohol	Calcium Hypochlorite	Dichloroethane
Amyl Chloride	Calcium Nitrate	Dichloroethylene
Aniline	Calcium Sulfate	Diesel Fuel
Aqua Regia	Carbolic Acid (Phenol)	Diethylene Glycol
Arsenic Acid	Carbon Dioxide	Diethyl Ether
Asphalt	Carbon Disulfide	Dimethyl Aniline
Barium Chloride	Carbon Monoxide	Dimethyl Ether
Barium Cyanide	Carbon Tetrachloride	Dimethyl Formamide
Barium Hydroxide	Carbonic Acid	Dipropylene Glycol
		Dioxane





Hi-Tech Seals

Dow Therm
Ethane
Ethanolamine
Ethers
Ethyl Acetate (Acetic Ester)
Ethyl Alcohol (Ethanol)
Ethyl Benzene
Ethyl Chloride
Ethyl Ether
Ethyl Hexoate
Ethyl Sulfate
Ethylene
Ethylene Bromide
Ethylene Chloride
Ethylene Glycol (Dihydroxyethane)
Ethylene Oxide
Ferric Chloride
Ferric Phosphate
Ferrous Chloride
Ferrous Sulfate
Formaldehyde (Formalin)
Formic Acid
Freon
Fuel Oil
Furan
Furfural (Furfuraldehyde)
Glycerine (Glycerol)
Glycol (Ethylene Glycol)
Glycolic Acid
Green Liquor (Sulfate Liquor)
Heptane
Hexachloroethane
Hexane
Hexamine
Hydraulic Fluid
Hydrazine
Hydrobromic Acid
Hydrochloric Acid
Hydrocyanic Acid
Hydrofluoric Acid
Hydrofluorosilicic Acid

Hydrofluosilicic Acid
Hydrogen
Hydrogen Chloride
Hydrogen Fluoride
Hydrogen Peroxide
Hydrogen Sulfide
Hypochlorous Acid
Iodine
Isobutane
Isobutyl Alcohol
Isopropyl Acetate
Isopropyl Alcohol
Isopropyl Ether
Kerosene
Lactic Acid
Lead Acetate
Lime (Calium Oxide)
Linseed Oil
Lubricating Oil
Lye
Magnesium Chloride
Magnesium Hydroxide
Magnesium Sulfate
Mercury
Methane
Methyl Acetate
Methyl Acetone
Methyl Alcohol (Methanol)
Methylacrylic Acid
Methyl Amine
Methyl Bromide
Methyl Chloride
Methyl Ethyl Ketone
Methylene Chloride
Mineral Oil
Monochloroethane
Naphtha
Naphthalene
Naphthols
Natural Gas
Nickel Chloride
Nickel Nitrate
Nickel Sulfate
Nitric Acid

Nitrobenzene
Nitrocalcite (Calcium Nitrate)
Nitrogen
Nitrogen Tetroxide
Nitromethane
Nitrous Acid
Nitrous Oxide
Octane
Oleic Acid
Oxalic Acid
Oxygen
Ozone
Palmitic Acid
Pentane
Perchloric Acid
Perchloroethylene
Perfluoroxylene
Petroleum Oil
Petroleum Benzene
Petroleum Ether
Phenol
Phosphoric Acid
Phosphorus Pentachloride
Phosphorus Trichloride
Phthalic Acid
Picric Acid
Pinene
Piperidine
Potash (Potassium Carbonate)
Potassium Acetate
Potassium Bichromate
Potassium Bromide
Potassium Chlorate
Potassium Chloride
Potassium Chromate
Potassium Cyanide
Potassium Dichromate
Potassium Hydrate
Potassium Hydroxide (Caustic Potash)
Potassium Hypochlorite
Potassium Iodide
Potassium Nitrate
Potassium Permanganate
Potassium Sulfate





Producer Gas
Propane
Propyl Acetate
Propyl Alcohol (Propanol)
Propylene
Propylene Glycol
Propyl Nitrate
Pydraul
Pyridine
Salicylic Acid
Sea Water
Silicone Oil
Silver Bromide
Silver Chloride
Silver Nitrate
Soap
Soda Ash (Sodium Carbonate)
Sodium Acetate
Sodium Acid Sulfate
Sodium Aluminate
Sodium Aluminum Sulfate
Sodium Bicarbonate
(Baking Soda)
Sodium Bisulfate
Sodium Bromide
Sodium Chloride
Sodium Chromate
Sodium Cyanide
Sodium Dioxide

Sodium Fluoride
Sodium Hydroxide (Caustic Soda)
Sodium Hypochlorite
Sodium Metaphosphate
Sodium Metasilicate
Sodium Nitrate
Sodium Perborate
Sodium Peroxide
Sodium Phosphate
Sodium Silicate (Water Glass)
Sodium Sulfate
Sodium Sulfide
Sodium Thiosulfate
Stannous Chloride
Starch
Steam
Stearic Acid
Styrene
Sulfate Liquor, Black
Sulfate Liquor, Green
Sulfur Chloride
Sulfur Dioxide
Sulfur Trioxide
Sulfuric Acid
Sulfurous Acid
Tannic Acid
Tartaric Acid
Tetrabromoethane
Tetrachloroethane

Tetrachloroethylene
Toluene (Toluol)
Tributyl Phosphate
Trichloroacetic Acid
Trichloroethane
Trichloroethylene
Trichloromonofluoroethane
Trichloropropane
Tricresyl Phosphate
Triethanolamine
Triethylamine
Turpentine
Urea
Varnish
Vinegar
Vinyl Acetate
Vinyl Chloride
Water, Acid Mine
Water, Boiler Feed
Whiskey
White Liquor, Pulp Mill
White Spirit
Wine
Xylenes (Xylol Xylol)
Zinc Chloride
Zinc Nitrate
Zinc Sulfate

Chemicals Not Compatible with RyFlor™

Bromine Trifluoride
Chlorine Trifluoride
Oxygen Difluoride
Fluorine
Molten Alkali Metals

